



HEALTH ANNUAL STATEMENT

FOR THE YEAR ENDED DECEMBER 31, 2024
OF THE CONDITION AND AFFAIRS OF THE

Wellmark Value Health Plan, Inc.

NAIC Group Code 0770 0770 NAIC Company Code 15934 Employer's ID Number 38-3988543
(Current) (Prior)

Organized under the Laws of Iowa, State of Domicile or Port of Entry IA

Country of Domicile United States of America

Licensed as business type: Health Maintenance Organization

Is HMO Federally Qualified? Yes [] No [X]

Incorporated/Organized 01/07/2016 Commenced Business 01/01/2017

Statutory Home Office 1331 Grand Avenue, Des Moines, IA, US 50309-2901
(Street and Number) (City or Town, State, Country and Zip Code)

Main Administrative Office 1331 Grand Avenue
(Street and Number)
Des Moines, IA, US 50309-2901, 515-376-4500
(City or Town, State, Country and Zip Code) (Area Code) (Telephone Number)

Mail Address 1331 Grand Avenue, Des Moines, IA, US 50309-2901
(Street and Number or P.O. Box) (City or Town, State, Country and Zip Code)

Primary Location of Books and Records 1331 Grand Avenue
(Street and Number)
Des Moines, IA, US 50309-2901, 515-376-4500
(City or Town, State, Country and Zip Code) (Area Code) (Telephone Number)

Internet Website Address www.wellmark.com

Statutory Statement Contact Ashley Ariel Arellano, 515-376-6307
(Name) (Area Code) (Telephone Number)
arellanoaa@wellmark.com, 515-376-9054
(E-mail Address) (FAX Number)

OFFICERS

President & Treasurer David Seth Brown Chief Compliance Officer Peter Rienhart Kitundu
Secretary Scott Andrew Sundstrom #

OTHER

DIRECTORS OR TRUSTEES

David Seth Brown Jason Richard Humphrey Kyle Christopher Lattina

State of Iowa SS
County of Polk

The officers of this reporting entity being duly sworn, each depose and say that they are the described officers of said reporting entity, and that on the reporting period stated above, all of the herein described assets were the absolute property of the said reporting entity, free and clear from any liens or claims thereon, except as herein stated, and that this statement, together with related exhibits, schedules and explanations therein contained, annexed or referred to, is a full and true statement of all the assets and liabilities and of the condition and affairs of the said reporting entity as of the reporting period stated above, and of its income and deductions therefrom for the period ended, and have been completed in accordance with the NAIC Annual Statement Instructions and Accounting Practices and Procedures manual except to the extent that: (1) state law may differ; or, (2) that state rules or regulations require differences in reporting not related to accounting practices and procedures, according to the best of their information, knowledge and belief, respectively. Furthermore, the scope of this attestation by the described officers also includes the related corresponding electronic filing with the NAIC, when required, that is an exact copy (except for formatting differences due to electronic filing) of the enclosed statement. The electronic filing may be requested by various regulators in lieu of or in addition to the enclosed statement.

David Seth Brown
President & Treasurer

Scott Andrew Sundstrom
Secretary

Subscribed and sworn to before me this _____ day of _____

- a. Is this an original filing? Yes [X] No []
b. If no,
1. State the amendment number.....
2. Date filed
3. Number of pages attached.....

ASSETS

	Current Year			Prior Year
	1 Assets	2 Nonadmitted Assets	3 Net Admitted Assets (Cols. 1 - 2)	4 Net Admitted Assets
1. Bonds (Schedule D)			0	0
2. Stocks (Schedule D):				
2.1 Preferred stocks			0	0
2.2 Common stocks			0	0
3. Mortgage loans on real estate (Schedule B):				
3.1 First liens			0	0
3.2 Other than first liens.....			0	0
4. Real estate (Schedule A):				
4.1 Properties occupied by the company (less \$ encumbrances)			0	0
4.2 Properties held for the production of income (less \$ encumbrances)			0	0
4.3 Properties held for sale (less \$ encumbrances)			0	0
5. Cash (\$ 2,101,417, Schedule E - Part 1), cash equivalents (\$, Schedule E - Part 2) and short-term investments (\$, Schedule DA)	2,101,417		2,101,417	6,014,778
6. Contract loans, (including \$ premium notes)			0	0
7. Derivatives (Schedule DB)			0	0
8. Other invested assets (Schedule BA)			0	0
9. Receivables for securities			0	0
10. Securities lending reinvested collateral assets (Schedule DL)			0	0
11. Aggregate write-ins for invested assets	0	0	0	0
12. Subtotals, cash and invested assets (Lines 1 to 11)	2,101,417	0	2,101,417	6,014,778
13. Title plants less \$ charged off (for Title insurers only)			0	0
14. Investment income due and accrued			0	0
15. Premiums and considerations:				
15.1 Uncollected premiums and agents' balances in the course of collection.....			0	0
15.2 Deferred premiums, agents' balances and installments booked but deferred and not yet due (including \$ earned but unbilled premiums)			0	0
15.3 Accrued retrospective premiums (\$) and contracts subject to redetermination (\$)			0	0
16. Reinsurance:				
16.1 Amounts recoverable from reinsurers			0	0
16.2 Funds held by or deposited with reinsured companies			0	0
16.3 Other amounts receivable under reinsurance contracts			0	0
17. Amounts receivable relating to uninsured plans			0	65,529
18.1 Current federal and foreign income tax recoverable and interest thereon			0	0
18.2 Net deferred tax asset	39,000		39,000	41,000
19. Guaranty funds receivable or on deposit			0	0
20. Electronic data processing equipment and software			0	0
21. Furniture and equipment, including health care delivery assets (\$)			0	0
22. Net adjustment in assets and liabilities due to foreign exchange rates			0	0
23. Receivables from parent, subsidiaries and affiliates			0	965,288
24. Health care (\$) and other amounts receivable			0	0
25. Aggregate write-ins for other-than-invested assets	0	0	0	0
26. Total assets excluding Separate Accounts, Segregated Accounts and Protected Cell Accounts (Lines 12 to 25)	2,140,417	0	2,140,417	7,086,595
27. From Separate Accounts, Segregated Accounts and Protected Cell Accounts			0	0
28. Total (Lines 26 and 27)	2,140,417	0	2,140,417	7,086,595
DETAILS OF WRITE-INS				
1101.				
1102.				
1103.				
1198. Summary of remaining write-ins for Line 11 from overflow page	0	0	0	0
1199. Totals (Lines 1101 through 1103 plus 1198)(Line 11 above)	0	0	0	0
2501.				
2502.				
2503.				
2598. Summary of remaining write-ins for Line 25 from overflow page	0	0	0	0
2599. Totals (Lines 2501 through 2503 plus 2598)(Line 25 above)	0	0	0	0

LIABILITIES, CAPITAL AND SURPLUS

	Current Year			Prior Year
	1 Covered	2 Uncovered	3 Total	4 Total
1. Claims unpaid (less \$ reinsurance ceded)			0	0
2. Accrued medical incentive pool and bonus amounts			0	0
3. Unpaid claims adjustment expenses.....			0	0
4. Aggregate health policy reserves, including the liability of \$0 for medical loss ratio rebate per the Public Health Service Act			0	0
5. Aggregate life policy reserves.....			0	0
6. Property/casualty unearned premium reserves.....			0	0
7. Aggregate health claim reserves.....			0	0
8. Premiums received in advance.....			0	0
9. General expenses due or accrued.....			0	413
10.1 Current federal and foreign income tax payable and interest thereon (including \$0 on realized capital gains (losses))	12,534		12,534	31,000
10.2 Net deferred tax liability.....			0	0
11. Ceded reinsurance premiums payable.....			0	0
12. Amounts withheld or retained for the account of others.....			0	0
13. Remittances and items not allocated.....			0	0
14. Borrowed money (including \$ current) and interest thereon \$ (including \$ current).....			0	0
15. Amounts due to parent, subsidiaries and affiliates.....	21,078		21,078	0
16. Derivatives.....			0	0
17. Payable for securities.....			0	0
18. Payable for securities lending			0	0
19. Funds held under reinsurance treaties (with \$ authorized reinsurers, \$0 unauthorized reinsurers and \$0 certified reinsurers).....			0	0
20. Reinsurance in unauthorized and certified (\$) companies			0	0
21. Net adjustments in assets and liabilities due to foreign exchange rates			0	0
22. Liability for amounts held under uninsured plans.....	862		862	0
23. Aggregate write-ins for other liabilities (including \$ current).....	0	0	0	0
24. Total liabilities (Lines 1 to 23).....	34,474	0	34,474	31,413
25. Aggregate write-ins for special surplus funds.....	XXX	XXX	0	0
26. Common capital stock.....	XXX	XXX	1,000,000	5,000,000
27. Preferred capital stock.....	XXX	XXX		
28. Gross paid in and contributed surplus.....	XXX	XXX		
29. Surplus notes.....	XXX	XXX	0	0
30. Aggregate write-ins for other-than-special surplus funds.....	XXX	XXX	0	0
31. Unassigned funds (surplus).....	XXX	XXX	1,105,943	2,055,182
32. Less treasury stock, at cost:				
32.1 shares common (value included in Line 26 \$).....	XXX	XXX		
32.2 shares preferred (value included in Line 27 \$).....	XXX	XXX		
33. Total capital and surplus (Lines 25 to 31 minus Line 32).....	XXX	XXX	2,105,943	7,055,182
34. Total liabilities, capital and surplus (Lines 24 and 33)	XXX	XXX	2,140,417	7,086,595
DETAILS OF WRITE-INS				
2301.				
2302.				
2303.				
2398. Summary of remaining write-ins for Line 23 from overflow page	0	0	0	0
2399. Totals (Lines 2301 through 2303 plus 2398)(Line 23 above)	0	0	0	0
2501.	XXX	XXX		
2502.	XXX	XXX		
2503.	XXX	XXX		
2598. Summary of remaining write-ins for Line 25 from overflow page	XXX	XXX	0	0
2599. Totals (Lines 2501 through 2503 plus 2598)(Line 25 above)	XXX	XXX	0	0
3001.	XXX	XXX		
3002.	XXX	XXX		
3003.	XXX	XXX		
3098. Summary of remaining write-ins for Line 30 from overflow page	XXX	XXX	0	0
3099. Totals (Lines 3001 through 3003 plus 3098)(Line 30 above)	XXX	XXX	0	0

STATEMENT OF REVENUE AND EXPENSES

	Current Year		Prior Year
	1 Uncovered	2 Total	3 Total
1. Member Months.....	XXX		
2. Net premium income (including \$ non-health premium income)	XXX	0	2,391
3. Change in unearned premium reserves and reserve for rate credits	XXX	0	
4. Fee-for-service (net of \$ medical expenses)	XXX	0	
5. Risk revenue	XXX	0	
6. Aggregate write-ins for other health care related revenues	XXX	0	0
7. Aggregate write-ins for other non-health revenues	XXX	0	0
8. Total revenues (Lines 2 to 7)	XXX	0	2,391
Hospital and Medical:			
9. Hospital/medical benefits		0	3,538
10. Other professional services		0	
11. Outside referrals		0	(780)
12. Emergency room and out-of-area		0	
13. Prescription drugs		0	(63,743)
14. Aggregate write-ins for other hospital and medical.....	0	0	0
15. Incentive pool, withhold adjustments and bonus amounts		0	
16. Subtotal (Lines 9 to 15)	0	0	(60,985)
Less:			
17. Net reinsurance recoveries		0	
18. Total hospital and medical (Lines 16 minus 17)	0	0	(60,985)
19. Non-health claims (net)			
20. Claims adjustment expenses, including \$0 cost containment expenses		0	(65,344)
21. General administrative expenses		251,025	190,986
22. Increase in reserves for life and accident and health contracts (including \$ increase in reserves for life only)		0	0
23. Total underwriting deductions (Lines 18 through 22).....	0	251,025	64,657
24. Net underwriting gain or (loss) (Lines 8 minus 23)	XXX	(251,025)	(62,266)
25. Net investment income earned (Exhibit of Net Investment Income, Line 17)		151,968	295,077
26. Net realized capital gains (losses) less capital gains tax of \$			
27. Net investment gains (losses) (Lines 25 plus 26)	0	151,968	295,077
28. Net gain or (loss) from agents' or premium balances charged off [(amount recovered \$) (amount charged off \$)]			
29. Aggregate write-ins for other income or expenses	0	(30,725)	0
30. Net income or (loss) after capital gains tax and before all other federal income taxes (Lines 24 plus 27 plus 28 plus 29)	XXX	(129,782)	232,811
31. Federal and foreign income taxes incurred	XXX	13,000	49,000
32. Net income (loss) (Lines 30 minus 31)	XXX	(142,782)	183,811
DETAILS OF WRITE-INS			
0601.	XXX		
0602.	XXX		
0603.	XXX		
0698. Summary of remaining write-ins for Line 6 from overflow page	XXX	0	0
0699. Totals (Lines 0601 through 0603 plus 0698)(Line 6 above)	XXX	0	0
0701.	XXX		
0702.	XXX		
0703.	XXX		
0798. Summary of remaining write-ins for Line 7 from overflow page	XXX	0	0
0799. Totals (Lines 0701 through 0703 plus 0798)(Line 7 above)	XXX	0	0
1401.			
1402.			
1403.			
1498. Summary of remaining write-ins for Line 14 from overflow page	0	0	0
1499. Totals (Lines 1401 through 1403 plus 1498)(Line 14 above)	0	0	0
2901. Other Expense		(30,725)	
2902.			
2903.			
2998. Summary of remaining write-ins for Line 29 from overflow page	0	0	0
2999. Totals (Lines 2901 through 2903 plus 2998)(Line 29 above)	0	(30,725)	0

STATEMENT OF REVENUE AND EXPENSES (Continued)

	1 Current Year	2 Prior Year
CAPITAL AND SURPLUS ACCOUNT		
33. Capital and surplus prior reporting year.....	7,055,182	6,993,243
34. Net income or (loss) from Line 32	(142,782)	183,811
35. Change in valuation basis of aggregate policy and claim reserves		
36. Change in net unrealized capital gains (losses) less capital gains tax of \$		
37. Change in net unrealized foreign exchange capital gain or (loss)		
38. Change in net deferred income tax	(2,000)	34,000
39. Change in nonadmitted assets	195,543	(155,872)
40. Change in unauthorized and certified reinsurance	0	0
41. Change in treasury stock	0	0
42. Change in surplus notes	0	0
43. Cumulative effect of changes in accounting principles.....		
44. Capital Changes:		
44.1 Paid in	(4,000,000)	0
44.2 Transferred from surplus (Stock Dividend).....	0	0
44.3 Transferred to surplus.....		
45. Surplus adjustments:		
45.1 Paid in	0	0
45.2 Transferred to capital (Stock Dividend)		
45.3 Transferred from capital		
46. Dividends to stockholders	(1,000,000)	
47. Aggregate write-ins for gains or (losses) in surplus	0	0
48. Net change in capital and surplus (Lines 34 to 47)	(4,949,239)	61,939
49. Capital and surplus end of reporting period (Line 33 plus 48)	2,105,943	7,055,182
DETAILS OF WRITE-INS		
4701.		
4702.		
4703.		
4798. Summary of remaining write-ins for Line 47 from overflow page	0	0
4799. Totals (Lines 4701 through 4703 plus 4798)(Line 47 above)	0	0

ANNUAL STATEMENT FOR THE YEAR 2024 OF THE Wellmark Value Health Plan, Inc.

CASH FLOW

	1	2
	Current Year	Prior Year
Cash from Operations		
1. Premiums collected net of reinsurance	0	2,391
2. Net investment income	151,968	295,077
3. Miscellaneous income	0	0
4. Total (Lines 1 through 3)	151,968	297,468
5. Benefit and loss related payments	0	(63,599)
6. Net transfers to Separate Accounts, Segregated Accounts and Protected Cell Accounts		
7. Commissions, expenses paid and aggregate write-ins for deductions	20,229	(953,035)
8. Dividends paid to policyholders		
9. Federal and foreign income taxes paid (recovered) net of \$0 tax on capital gains (losses)	31,466	36,200
10. Total (Lines 5 through 9)	51,695	(980,434)
11. Net cash from operations (Line 4 minus Line 10)	100,273	1,277,902
Cash from Investments		
12. Proceeds from investments sold, matured or repaid:		
12.1 Bonds	0	0
12.2 Stocks	0	0
12.3 Mortgage loans	0	0
12.4 Real estate	0	0
12.5 Other invested assets	0	0
12.6 Net gains or (losses) on cash, cash equivalents and short-term investments	0	0
12.7 Miscellaneous proceeds	0	0
12.8 Total investment proceeds (Lines 12.1 to 12.7)	0	0
13. Cost of investments acquired (long-term only):		
13.1 Bonds	0	0
13.2 Stocks	0	0
13.3 Mortgage loans	0	0
13.4 Real estate	0	0
13.5 Other invested assets	0	0
13.6 Miscellaneous applications	0	0
13.7 Total investments acquired (Lines 13.1 to 13.6)	0	0
14. Net increase/(decrease) in contract loans and premium notes	0	0
15. Net cash from investments (Line 12.8 minus Line 13.7 minus Line 14)	0	0
Cash from Financing and Miscellaneous Sources		
16. Cash provided (applied):		
16.1 Surplus notes, capital notes	0	0
16.2 Capital and paid in surplus, less treasury stock	(4,000,000)	0
16.3 Borrowed funds	0	0
16.4 Net deposits on deposit-type contracts and other insurance liabilities	0	0
16.5 Dividends to stockholders	1,000,000	0
16.6 Other cash provided (applied)	986,366	(1,098,204)
17. Net cash from financing and miscellaneous sources (Lines 16.1 to 16.4 minus Line 16.5 plus Line 16.6)	(4,013,634)	(1,098,204)
RECONCILIATION OF CASH, CASH EQUIVALENTS AND SHORT-TERM INVESTMENTS		
18. Net change in cash, cash equivalents and short-term investments (Line 11, plus Lines 15 and 17)	(3,913,361)	179,698
19. Cash, cash equivalents and short-term investments:		
19.1 Beginning of year	6,014,778	5,835,080
19.2 End of year (Line 18 plus Line 19.1)	2,101,417	6,014,778

Note: Supplemental disclosures of cash flow information for non-cash transactions:

--	--	--

ANNUAL STATEMENT FOR THE YEAR 2024 OF THE Wellmark Value Health Plan, Inc.

ANALYSIS OF OPERATIONS BY LINES OF BUSINESS

	1 Total	Comprehensive (Hospital & Medical)		4 Medicare Supplement	5 Vision Only	6 Dental Only	7 Federal Employees Health Benefits Plan	8 Title XVIII Medicare	9 Title XIX Medicaid	10 Credit A&H	11 Disability Income	12 Long-Term Care	13 Other Health	14 Other Non-Health
		2 Individual	3 Group											
1. Net premium income	0													
2. Change in unearned premium reserves and reserve for rate credit	0													
3. Fee-for-service (net of \$ medical expenses)	0													XXX
4. Risk revenue	0													XXX
5. Aggregate write-ins for other health care related revenues	0	0	0	0	0	0	0	0	0	0	0	0	0	XXX
6. Aggregate write-ins for other non-health care related revenues	0	XXX	XXX	XXX	XXX	XXX	XXX	XXX	XXX	XXX	XXX	XXX	XXX	0
7. Total revenues (Lines 1 to 6)	0	0	0	0	0	0	0	0	0	0	0	0	0	0
8. Hospital/medical benefits	0													XXX
9. Other professional services	0													XXX
10. Outside referrals	0													XXX
11. Emergency room and out-of-area	0													XXX
12. Prescription drugs	0													XXX
13. Aggregate write-ins for other hospital and medical	0	0	0	0	0	0	0	0	0	0	0	0	0	XXX
14. Incentive pool, withhold adjustments and bonus amounts	0													XXX
15. Subtotal (Lines 8 to 14)	0	0	0	0	0	0	0	0	0	0	0	0	0	XXX
16. Net reinsurance recoveries	0													XXX
17. Total medical and hospital (Lines 15 minus 16)	0	0	0	0	0	0	0	0	0	0	0	0	0	XXX
18. Non-health claims (net)	0	XXX	XXX	XXX	XXX	XXX	XXX	XXX	XXX	XXX	XXX	XXX	XXX	
19. Claims adjustment expenses including \$ cost containment expenses	0													
20. General administrative expenses	251,025		6,339										244,686	
21. Increase in reserves for accident and health contracts	0													XXX
22. Increase in reserves for life contracts	0	XXX	XXX	XXX	XXX	XXX	XXX	XXX	XXX	XXX	XXX	XXX	XXX	
23. Total underwriting deductions (Lines 17 to 22)	251,025	0	6,339	0	0	0	0	0	0	0	0	0	244,686	0
24. Net underwriting gain or (loss) (Line 7 minus Line 23)	(251,025)	0	(6,339)	0	0	0	0	0	0	0	0	0	(244,686)	0
DETAILS OF WRITE-INS														
0501.														XXX
0502.														XXX
0503.														XXX
0598. Summary of remaining write-ins for Line 5 from overflow page	0	0	0	0	0	0	0	0	0	0	0	0	0	XXX
0599. Totals (Lines 0501 through 0503 plus 0598) (Line 5 above)	0	0	0	0	0	0	0	0	0	0	0	0	0	XXX
0601.		XXX	XXX	XXX	XXX	XXX	XXX	XXX	XXX	XXX	XXX	XXX	XXX	
0602.		XXX	XXX	XXX	XXX	XXX	XXX	XXX	XXX	XXX	XXX	XXX	XXX	
0603.		XXX	XXX	XXX	XXX	XXX	XXX	XXX	XXX	XXX	XXX	XXX	XXX	
0698. Summary of remaining write-ins for Line 6 from overflow page	0	XXX	XXX	XXX	XXX	XXX	XXX	XXX	XXX	XXX	XXX	XXX	XXX	0
0699. Totals (Lines 0601 through 0603 plus 0698) (Line 6 above)	0	XXX	XXX	XXX	XXX	XXX	XXX	XXX	XXX	XXX	XXX	XXX	XXX	0
1301.														XXX
1302.														XXX
1303.														XXX
1398. Summary of remaining write-ins for Line 13 from overflow page	0	0	0	0	0	0	0	0	0	0	0	0	0	XXX
1399. Totals (Lines 1301 through 1303 plus 1398) (Line 13 above)	0	0	0	0	0	0	0	0	0	0	0	0	0	XXX

Underwriting and Investment Exhibit - Part 1 - Premiums

N O N E

Underwriting and Investment Exhibit - Part 2 - Claims Incurred

N O N E

Underwriting and Investment Exhibit - Part 2A - Claims Liability

N O N E

Underwriting and Investment Exhibit - Part 2B - Analysis of Claims

N O N E

UNDERWRITING AND INVESTMENT EXHIBIT

PART 2C - DEVELOPMENT OF PAID AND INCURRED HEALTH CLAIMS

(\$000 Omitted)

Section A - Paid Health Claims - Comprehensive (Hospital & Medical)

Year in Which Losses Were Incurred		Cumulative Net Amounts Paid				
		1 2020	2 2021	3 2022	4 2023	5 2024
1.	Prior	1,796	1,784	1,784	1,784	
2.	2020	8,256	9,041	8,968	8,968	
3.	2021	XXX	167	94	30	
4.	2022	XXX	XXX	0	0	
5.	2023	XXX	XXX	XXX	0	
6.	2024	XXX	XXX	XXX	XXX	

Section B - Incurred Health Claims - Comprehensive (Hospital & Medical)

Year in Which Losses Were Incurred		Sum of Cumulative Net Amount Paid and Claim Liability, Claim Reserve and Medical Incentive Pool and Bonuses Outstanding at End of Year				
		1 2020	2 2021	3 2022	4 2023	5 2024
1.	Prior	2,054	1,784	1,784	1,784	
2.	2020	9,681	9,043	8,968	8,968	
3.	2021	XXX	537	94	30	
4.	2022	XXX	XXX	0	0	
5.	2023	XXX	XXX	XXX	0	
6.	2024	XXX	XXX	XXX	XXX	

Section C - Incurred Year Health Claims and Claims Adjustment Expense Ratio - Comprehensive (Hospital & Medical)

Years in which Premiums were Earned and Claims were Incurred	1 Premiums Earned	2 Claims Payment	3 Claim Adjustment Expense Payments	4 (Col. 3/2) Percent	5 Claim and Claim Adjustment Expense Payments (Col. 2 + 3)	6 (Col. 5/1) Percent	7 Claims Unpaid	8 Unpaid Claims Adjustment Expenses	9 Total Claims and Claims Adjustment Expense Incurred (Col. 5+7+8)	10 (Col. 9/1) Percent
1. 2020	17,085	8,968	310	3.5	9,278	54.3			9,278	54.3
2. 2021	193	30	(34)	(113.3)	(4)	(2.1)			(4)	(2.1)
3. 2022	14	0	(32)	0.0	(32)	(228.6)			(32)	(228.6)
4. 2023	2	0	0	0.0	0	0.0			0	0.0
5. 2024	0	0	0	0.0	0	0.0			0	0.0

ANNUAL STATEMENT FOR THE YEAR 2024 OF THE Wellmark Value Health Plan, Inc.

UNDERWRITING AND INVESTMENT EXHIBIT

PART 2C - DEVELOPMENT OF PAID AND INCURRED HEALTH CLAIMS

(\$000 Omitted)

Section A - Paid Health Claims - Grand Total

Year in Which Losses Were Incurred		Cumulative Net Amounts Paid				
		1 2020	2 2021	3 2022	4 2023	5 2024
1.	Prior	1,796	1,784	1,784	1,784	0
2.	2020	8,256	9,041	8,968	8,968	0
3.	2021	XXX	167	94	30	0
4.	2022	XXX	XXX	0	0	0
5.	2023	XXX	XXX	XXX	0	0
6.	2024	XXX	XXX	XXX	XXX	0

Section B - Incurred Health Claims - Grand Total

Year in Which Losses Were Incurred		Sum of Cumulative Net Amount Paid and Claim Liability, Claim Reserve and Medical Incentive Pool and Bonuses Outstanding at End of Year				
		1 2020	2 2021	3 2022	4 2023	5 2024
1.	Prior	2,054	1,784	1,784	1,784	0
2.	2020	9,681	9,043	8,968	8,968	0
3.	2021	XXX	537	94	30	0
4.	2022	XXX	XXX	0	0	0
5.	2023	XXX	XXX	XXX	0	0
6.	2024	XXX	XXX	XXX	XXX	0

Section C - Incurred Year Health Claims and Claims Adjustment Expense Ratio - Grand Total

Years in which Premiums were Earned and Claims were Incurred	1 Premiums Earned	2 Claims Payment	3 Claim Adjustment Expense Payments	4 (Col. 3/2) Percent	5 Claim and Claim Adjustment Expense Payments (Col. 2 + 3)	6 (Col. 5/1) Percent	7 Claims Unpaid	8 Unpaid Claims Adjustment Expenses	9 Total Claims and Claims Adjustment Expense Incurred (Col. 5+7+8)	10 (Col. 9/1) Percent
1. 2020	17,085	8,968	310	3.5	9,278	54.3	0	0	9,278	54.3
2. 2021	193	30	(34)	(113.3)	(4)	(2.1)	0	0	(4)	(2.1)
3. 2022	14	0	(32)	0.0	(32)	(228.6)	0	0	(32)	(228.6)
4. 2023	2	0	0	0.0	0	0.0	0	0	0	0.0
5. 2024	0	0	0	0.0	0	0.0	0	0	0	0.0

12.GT

UNDERWRITING AND INVESTMENT EXHIBIT

PART 2D - AGGREGATE RESERVE FOR ACCIDENT AND HEALTH CONTRACTS ONLY

	1 Total	Comprehensive (Hospital & Medical)		4 Medicare Supplement	5 Vision Only	6 Dental Only	7 Federal Employees Health Benefits Plan	8 Title XVIII Medicare	9 Title XIX Medicaid	10 Credit A&H	11 Disability Income	12 Long-Term Care	13 Other
		2 Individual	3 Group										
1. Unearned premium reserves													
2. Additional policy reserves (a)													
3. Reserve for future contingent benefits													
4. Reserve for rate credits or experience rating refunds (including \$ for investment income) ..													
5. Aggregate write-ins for other policy reserves													
6. Totals (gross)													
7. Reinsurance ceded													
8. Totals (Net)(Page 3, Line 4)													
9. Present value of amounts not yet due on claims													
10. Reserve for future contingent benefits													
11. Aggregate write-ins for other claim reserves													
12. Totals (gross)													
13. Reinsurance ceded													
14. Totals (Net)(Page 3, Line 7)													
NONE													
DETAILS OF WRITE-INS													
0501.													
0502.													
0503.													
0598. Summary of remaining write-ins for Line 5 from overflow page.....													
0599. Totals (Lines 0501 through 0503 plus 0598) (Line 5 above)													
1101.													
1102.													
1103.													
1198. Summary of remaining write-ins for Line 11 from overflow page													
1199. Totals (Lines 1101 through 1103 plus 1198) (Line 11 above)													

(a) Includes \$ premium deficiency reserve.

UNDERWRITING AND INVESTMENT EXHIBIT

PART 3 - ANALYSIS OF EXPENSES

	Claim Adjustment Expenses		3 General Administrative Expenses	4 Investment Expenses	5 Total
	1 Cost Containment Expenses	2 Other Claim Adjustment Expenses			
1. Rent (\$ for occupancy of own building)					0
2. Salary, wages and other benefits					0
3. Commissions (less \$ ceded plus \$ assumed)					0
4. Legal fees and expenses			327		327
5. Certifications and accreditation fees					0
6. Auditing, actuarial and other consulting services ...					0
7. Traveling expenses					0
8. Marketing and advertising					0
9. Postage, express and telephone					0
10. Printing and office supplies					0
11. Occupancy, depreciation and amortization					0
12. Equipment					0
13. Cost or depreciation of EDP equipment and software			4,414		4,414
14. Outsourced services including EDP, claims, and other services			516		516
15. Boards, bureaus and association fees					0
16. Insurance, except on real estate					0
17. Collection and bank service charges					0
18. Group service and administration fees					0
19. Reimbursements by uninsured plans			244,686		244,686
20. Reimbursements from fiscal intermediaries					0
21. Real estate expenses					0
22. Real estate taxes					0
23. Taxes, licenses and fees:					
23.1 State and local insurance taxes					0
23.2 State premium taxes					0
23.3 Regulatory authority licenses and fees			340		340
23.4 Payroll taxes					0
23.5 Other (excluding federal income and real estate taxes)			742		742
24. Investment expenses not included elsewhere					0
25. Aggregate write-ins for expenses	0	0	0	0	0
26. Total expenses incurred (Lines 1 to 25)	0	0	251,025	0	(a) 251,025
27. Less expenses unpaid December 31, current year					0
28. Add expenses unpaid December 31, prior year			413		413
29. Amounts receivable relating to uninsured plans, prior year			261,072		261,072
30. Amounts receivable relating to uninsured plans, current year					0
31. Total expenses paid (Lines 26 minus 27 plus 28 minus 29 plus 30)	0	0	(9,634)	0	(9,634)
DETAILS OF WRITE-INS					
2501.					
2502.					
2503.					
2598. Summary of remaining write-ins for Line 25 from overflow page	0	0	0	0	0
2599. Totals (Lines 2501 through 2503 plus 2598)(Line 25 above)	0	0	0	0	0

(a) Includes management fees of \$0 to affiliates and \$ to non-affiliates.

EXHIBIT OF NET INVESTMENT INCOME

	1 Collected During Year	2 Earned During Year
1. U.S. government bonds	(a)	
1.1 Bonds exempt from U.S. tax	(a)	
1.2 Other bonds (unaffiliated)	(a)	
1.3 Bonds of affiliates	(a)	
2.1 Preferred stocks (unaffiliated)	(b)	
2.11 Preferred stocks of affiliates	(b)	
2.2 Common stocks (unaffiliated)		
2.21 Common stocks of affiliates		
3. Mortgage loans	(c)	
4. Real estate	(d)	
5. Contract Loans		
6. Cash, cash equivalents and short-term investments	(e) 151,968	151,968
7. Derivative instruments	(f)	
8. Other invested assets		
9. Aggregate write-ins for investment income	0	0
10. Total gross investment income	151,968	151,968
11. Investment expenses		(g) 0
12. Investment taxes, licenses and fees, excluding federal income taxes		(g) 0
13. Interest expense		(h)
14. Depreciation on real estate and other invested assets		(i)
15. Aggregate write-ins for deductions from investment income		0
16. Total deductions (Lines 11 through 15)		0
17. Net investment income (Line 10 minus Line 16)		151,968
DETAILS OF WRITE-INS		
0901.		
0902.		
0903.		
0998. Summary of remaining write-ins for Line 9 from overflow page	0	0
0999. Totals (Lines 0901 through 0903 plus 0998) (Line 9, above)	0	0
1501.		
1502.		
1503.		
1598. Summary of remaining write-ins for Line 15 from overflow page		0
1599. Totals (Lines 1501 through 1503 plus 1598) (Line 15, above)		0

- (a) Includes \$ 0 accrual of discount less \$ 0 amortization of premium and less \$ paid for accrued interest on purchases.
- (b) Includes \$ 0 accrual of discount less \$ 0 amortization of premium and less \$ paid for accrued dividends on purchases.
- (c) Includes \$ 0 accrual of discount less \$ 0 amortization of premium and less \$ paid for accrued interest on purchases.
- (d) Includes \$ for company's occupancy of its own buildings; and excludes \$ interest on encumbrances.
- (e) Includes \$ accrual of discount less \$ amortization of premium and less \$ paid for accrued interest on purchases.
- (f) Includes \$ accrual of discount less \$ amortization of premium.
- (g) Includes \$ investment expenses and \$ investment taxes, licenses and fees, excluding federal income taxes, attributable to segregated and Separate Accounts.
- (h) Includes \$ interest on surplus notes and \$ interest on capital notes.
- (i) Includes \$ 0 depreciation on real estate and \$ depreciation on other invested assets.

EXHIBIT OF CAPITAL GAINS (LOSSES)

	1	2	3	4	5
	Realized Gain (Loss) On Sales or Maturity	Other Realized Adjustments	Total Realized Capital Gain (Loss) (Columns 1 + 2)	Change in Unrealized Capital Gain (Loss)	Change in Unrealized Foreign Exchange Capital Gain (Loss)
1. U.S. Government bonds					
1.1 Bonds exempt from U.S. tax					
1.2 Other bonds (unaffiliated)					
1.3 Bonds of affiliates					
2.1 Preferred stocks (unaffiliated)					
2.11 Preferred stocks of affiliates					
2.2 Common stocks (unaffiliated)					
2.21 Common stocks of affiliates					
3. Mortgage loans					
4. Real estate					
5. Contract loans					
6. Cash, cash equivalents and short-term investments					
7. Derivative instruments					
8. Other invested assets					
9. Aggregate write-ins for capital gains (losses)					
10. Total capital gains (losses)					
NONE					
DETAILS OF WRITE-INS					
0901.					
0902.					
0903.					
0998. Summary of remaining write-ins for Line 9 from overflow page					
0999. Totals (Lines 0901 through 0903 plus 0998) (Line 9, above)					

EXHIBIT OF NON-ADMITTED ASSETS

	1	2	3
	Current Year Total Nonadmitted Assets	Prior Year Total Nonadmitted Assets	Change in Total Nonadmitted Assets (Col. 2 - Col. 1)
1. Bonds (Schedule D)			0
2. Stocks (Schedule D):			
2.1 Preferred stocks			0
2.2 Common stocks			0
3. Mortgage loans on real estate (Schedule B):			
3.1 First liens			0
3.2 Other than first liens.....			0
4. Real estate (Schedule A):			
4.1 Properties occupied by the company			0
4.2 Properties held for the production of income.....			0
4.3 Properties held for sale			0
5. Cash (Schedule E - Part 1), cash equivalents (Schedule E - Part 2) and short-term investments (Schedule DA)			0
6. Contract loans			0
7. Derivatives (Schedule DB)			0
8. Other invested assets (Schedule BA)			0
9. Receivables for securities			0
10. Securities lending reinvested collateral assets (Schedule DL)			0
11. Aggregate write-ins for invested assets	0	0	0
12. Subtotals, cash and invested assets (Lines 1 to 11)	0	0	0
13. Title plants (for Title insurers only)			0
14. Investment income due and accrued			0
15. Premiums and considerations:			
15.1 Uncollected premiums and agents' balances in the course of collection			0
15.2 Deferred premiums, agents' balances and installments booked but deferred and not yet due ..			0
15.3 Accrued retrospective premiums and contracts subject to redetermination			0
16. Reinsurance:			
16.1 Amounts recoverable from reinsurers			0
16.2 Funds held by or deposited with reinsured companies			0
16.3 Other amounts receivable under reinsurance contracts			0
17. Amounts receivable relating to uninsured plans		195,543	195,543
18.1 Current federal and foreign income tax recoverable and interest thereon			0
18.2 Net deferred tax asset			0
19. Guaranty funds receivable or on deposit			0
20. Electronic data processing equipment and software			0
21. Furniture and equipment, including health care delivery assets			0
22. Net adjustment in assets and liabilities due to foreign exchange rates			0
23. Receivable from parent, subsidiaries and affiliates			0
24. Health care and other amounts receivable			0
25. Aggregate write-ins for other-than-invested assets	0	0	0
26. Total assets excluding Separate Accounts, Segregated Accounts and Protected Cell Accounts (Lines 12 to 25)	0	195,543	195,543
27. From Separate Accounts, Segregated Accounts and Protected Cell Accounts			0
28. Total (Lines 26 and 27)	0	195,543	195,543
DETAILS OF WRITE-INS			
1101.			
1102.			
1103.			
1198. Summary of remaining write-ins for Line 11 from overflow page	0	0	0
1199. Totals (Lines 1101 through 1103 plus 1198)(Line 11 above)	0	0	0
2501.			
2502.			
2503.			
2598. Summary of remaining write-ins for Line 25 from overflow page	0	0	0
2599. Totals (Lines 2501 through 2503 plus 2598)(Line 25 above)	0	0	0

Exhibit 1 - Enrollment by Product Type for Health Business Only

N O N E

NOTES TO FINANCIAL STATEMENTS

NOTE 1 Summary of Significant Accounting Policies and Going Concern

A. Accounting Practices

The financial statements of Wellmark Value Health Plan, Inc. (the Company) have been prepared in conformity with the accounting practices prescribed by the National Association of Insurance Commissioners (NAIC) and the State of Iowa.

The NAIC Accounting Practices and Procedures manual has been adopted as a component of prescribed or permitted practices by the State of Iowa. The Commissioner of Insurance has the right to permit specific practices that deviate from prescribed practices. The Company does not have any permitted practices.

	SSAP #	F/S Page	F/S Line #	2024	2023
NET INCOME					
(1) State basis (Page 4, Line 32, Columns 2 & 3)	XXX	XXX	XXX	\$ (142,782)	\$ 183,811
(2) State Prescribed Practices that are an increase/ (decrease) from NAIC SAP:					
(3) State Permitted Practices that are an increase/ (decrease) from NAIC SAP:					
(4) NAIC SAP (1-2-3=4)	XXX	XXX	XXX	\$ (142,782)	\$ 183,811
SURPLUS					
(5) State basis (Page 3, Line 33, Columns 3 & 4)	XXX	XXX	XXX	\$ 2,105,943	\$ 7,055,182
(6) State Prescribed Practices that are an increase/ (decrease) from NAIC SAP:					
(7) State Permitted Practices that are an increase/ (decrease) from NAIC SAP:					
(8) NAIC SAP (5-6-7=8)	XXX	XXX	XXX	\$ 2,105,943	\$ 7,055,182

B. Use of Estimates in the Preparation of the Financial Statements

The preparation of financial statements in conformity with Statutory Accounting Principles requires management to make estimates and assumptions that affect the reported amounts of assets and liabilities. It also requires disclosure of contingent assets and liabilities at the date of the financial statements and the reported amounts of revenue and expenses during the period. Actual results could differ from those estimates.

C. Accounting Policy

- (1) Basis for Short-Term Investments - Not Applicable.
- (2) Basis for Bonds, Mandatory Convertible Securities, SVO-Identified Investments and Amortization Method - Not Applicable.
- (3) Basis for Common Stocks - Not Applicable.
- (4) Basis for Preferred Stocks - Not Applicable.
- (5) Basis for Mortgage Loans - Not Applicable.
- (6) Basis for Loan-Backed Securities and Adjustment Methodology - Not Applicable.
- (7) Accounting Policies for Investments in Subsidiaries, Controlled and Affiliated Entities - Not Applicable.
- (8) Accounting Policies for Investments in Joint Ventures, Partnerships and Limited Liability Entities - Not Applicable.
- (9) Accounting Policies for Derivatives - Not Applicable.
- (10) Anticipated Investment Income Used in Premium Deficiency Calculation - Not Applicable.
- (11) Management's Policies and Methodologies for Estimating Liabilities for Losses and Loss/Claim Adjustment Expenses - Not Applicable.
- (12) Changes in the Capitalization Policy and Predefined Thresholds from Prior Period - Not Applicable.
- (13) Method Used to Estimate Pharmaceutical Rebate Receivable - Not Applicable.

D. Going Concern

Management has evaluated the Company's ability to continue as a going concern and has concluded that there are no events or circumstances that raise any doubt about the Company's ability to continue as a going concern. As of January 1, 2021, the Company no longer offered contracts for covered health care services.

NOTE 2 Accounting Changes and Corrections of Errors

Not Applicable.

NOTE 3 Business Combinations and Goodwill

Not Applicable.

NOTE 4 Discontinued Operations

Not Applicable.

NOTE 5 Investments

Not Applicable.

NOTES TO FINANCIAL STATEMENTS

NOTE 6 Joint Ventures, Partnerships and Limited Liability Companies

Not Applicable.

NOTE 7 Investment Income

Not Applicable.

NOTE 8 Derivative Instruments

Not Applicable.

NOTE 9 Income Taxes

A. Deferred Tax Assets/(Liabilities)

1. Components of Net Deferred Tax Asset (Liability)

	12/31/2024			12/31/2023			Change		
	(1) Ordinary	(2) Capital	(3) (Col. 1 + 2) Total	(4) Ordinary	(5) Capital	(6) (Col. 4 + 5) Total	(7) (Col. 1 - 4) Ordinary	(8) (Col. 2 - 5) Capital	(9) (Col. 7 + 8) Total
(a) Gross Deferred Tax Assets	\$ 39,000	\$ -	\$ 39,000	\$ 41,000	\$ -	\$ 41,000	\$ (2,000)	\$ -	\$ (2,000)
(b) Statutory Valuation Allowance Adjustment	\$ -	\$ -	\$ -	\$ -	\$ -	\$ -	\$ -	\$ -	\$ -
(c) Adjusted Gross Deferred Tax Assets (1a - 1b)	\$ 39,000	\$ -	\$ 39,000	\$ 41,000	\$ -	\$ 41,000	\$ (2,000)	\$ -	\$ (2,000)
(d) Deferred Tax Assets Nonadmitted	\$ -	\$ -	\$ -	\$ -	\$ -	\$ -	\$ -	\$ -	\$ -
(e) Subtotal Net Admitted Deferred Tax Asset (1c - 1d)	\$ 39,000	\$ -	\$ 39,000	\$ 41,000	\$ -	\$ 41,000	\$ (2,000)	\$ -	\$ (2,000)
(f) Deferred Tax Liabilities	\$ -	\$ -	\$ -	\$ -	\$ -	\$ -	\$ -	\$ -	\$ -
(g) Net Admitted Deferred Tax Asset/(Net Deferred Tax Liability) (1e - 1f)	\$ 39,000	\$ -	\$ 39,000	\$ 41,000	\$ -	\$ 41,000	\$ (2,000)	\$ -	\$ (2,000)

2. Admission Calculation Components SSAP No. 101

	12/31/2024			12/31/2023			Change		
	(1) Ordinary	(2) Capital	(3) (Col. 1 + 2) Total	(4) Ordinary	(5) Capital	(6) (Col. 4 + 5) Total	(7) (Col. 1 - 4) Ordinary	(8) (Col. 2 - 5) Capital	(9) (Col. 7 + 8) Total
(a) Federal Income Taxes Paid In Prior Years Recoverable Through Loss Carrybacks.	\$ 39,000	\$ -	\$ 39,000	\$ 41,000	\$ -	\$ 41,000	\$ (2,000)	\$ -	\$ (2,000)
(b) Adjusted Gross Deferred Tax Assets Expected To Be Realized (Excluding The Amount Of Deferred Tax Assets From 2(a) above) After Application of the Threshold Limitation (The Lesser of 2(b)1 and 2(b)2 Below)	\$ -	\$ -	\$ -	\$ -	\$ -	\$ -	\$ -	\$ -	\$ -
1. Adjusted Gross Deferred Tax Assets Expected to be Realized Following the Balance Sheet Date.	\$ -	\$ -	\$ -	\$ -	\$ -	\$ -	\$ -	\$ -	\$ -
2. Adjusted Gross Deferred Tax Assets Allowed per Limitation Threshold.	XXX	XXX	\$ 310,041	XXX	XXX	\$ 1,052,127	XXX	XXX	\$ (742,086)
(c) Adjusted Gross Deferred Tax Assets (Excluding The Amount Of Deferred Tax Assets From 2(a) and 2(b) above) Offset by Gross Deferred Tax Liabilities.			\$ -			\$ -	\$ -	\$ -	\$ -
(d) Deferred Tax Assets Admitted as the result of application of SSAP No. 101. Total (2(a) + 2(b) + 2(c))	\$ 39,000	\$ -	\$ 39,000	\$ 41,000	\$ -	\$ 41,000	\$ (2,000)	\$ -	\$ (2,000)

3. Other Admissibility Criteria

	2024	2023
a. Ratio Percentage Used To Determine Recovery Period And Threshold Limitation Amount.	57930.017%	899.447%
b. Amount Of Adjusted Capital And Surplus Used To Determine Recovery Period And Threshold Limitation In 2(b)2 Above.	\$ 2,066,943	\$ 7,014,182

4. Impact of Tax-Planning Strategies

a. Determination of adjusted gross deferred tax assets and net admitted deferred tax assets, by tax character as a percentage.

	12/31/2024		12/31/2023		Change	
	(1) Ordinary	(2) Capital	(3) Ordinary	(4) Capital	(5) (Col. 1 - 3) Ordinary	(6) (Col. 2 - 4) Capital
(a) Determination of Adjusted Gross Deferred Tax Assets And Net Admitted Deferred Tax Assets, By Tax Character As A Percentage.						
1. Adjusted Gross DTAs Amount From Note 9A1(c)	\$ 39,000	\$ -	\$ 41,000	\$ -	\$ (2,000)	\$ -
2. Percentage Of Adjusted Gross DTAs By Tax Character Attributable To The Impact Of Tax Planning Strategies	0.000%	0.000%	0.000%	0.000%	0.000%	0.000%
3. Net Admitted Adjusted Gross DTAs Amount From Note 9A1(e)	\$ 39,000	\$ -	\$ 41,000	\$ -	\$ (2,000)	\$ -
4. Percentage Of Net Admitted Adjusted Gross DTAs By Tax Character Admitted Because Of The Impact Of Tax Planning Strategies	0.000%	0.000%	0.000%	0.000%	0.000%	0.000%

b. Does the Company's tax-planning strategies include the use of reinsurance? Yes No

NOTES TO FINANCIAL STATEMENTS

B. Deferred Tax Liabilities Are Not Recognized For the Following Amounts:

None

C. Current and Deferred Income Taxes

	(1) 12/31/2024	(2) 12/31/2023	(3) (Col. 1 - 2) Change
1. Current Income Tax			
(a) Federal	\$ 13,000	\$ 49,000	\$ (36,000)
(b) Foreign	\$ -	\$ -	\$ -
(c) Subtotal (1a+1b)	\$ 13,000	\$ 49,000	\$ (36,000)
(d) Federal income tax on net capital gains	\$ -	\$ -	\$ -
(e) Utilization of capital loss carry-forwards	\$ -	\$ -	\$ -
(f) Other	\$ -	\$ -	\$ -
(g) Federal and foreign income taxes incurred (1c+1d+1e+1f)	\$ 13,000	\$ 49,000	\$ (36,000)
2. Deferred Tax Assets:			
(a) Ordinary:			
(1) Discounting of unpaid losses	\$ -	\$ -	\$ -
(2) Unearned premium reserve	\$ -	\$ -	\$ -
(3) Policyholder reserves	\$ -	\$ -	\$ -
(4) Investments	\$ -	\$ -	\$ -
(5) Deferred acquisition costs	\$ -	\$ -	\$ -
(6) Policyholder dividends accrual	\$ -	\$ -	\$ -
(7) Fixed assets	\$ -	\$ -	\$ -
(8) Compensation and benefits accrual	\$ -	\$ -	\$ -
(9) Pension accrual	\$ -	\$ -	\$ -
(10) Receivables - nonadmitted	\$ -	\$ 41,000	\$ (41,000)
(11) Net operating loss carry-forward	\$ -	\$ -	\$ -
(12) Tax credit carry-forward	\$ -	\$ -	\$ -
(13) Other	\$ 39,000	\$ -	\$ 39,000
(99) Subtotal (sum of 2a1 through 2a13)	\$ 39,000	\$ 41,000	\$ (2,000)
(b) Statutory valuation allowance adjustment	\$ -	\$ -	\$ -
(c) Nonadmitted	\$ -	\$ -	\$ -
(d) Admitted ordinary deferred tax assets (2a99 - 2b - 2c)	\$ 39,000	\$ 41,000	\$ (2,000)
(e) Capital:			
(1) Investments	\$ -	\$ -	\$ -
(2) Net capital loss carry-forward	\$ -	\$ -	\$ -
(3) Real estate	\$ -	\$ -	\$ -
(4) Other	\$ -	\$ -	\$ -
(99) Subtotal (2e1+2e2+2e3+2e4)	\$ -	\$ -	\$ -
(f) Statutory valuation allowance adjustment	\$ -	\$ -	\$ -
(g) Nonadmitted	\$ -	\$ -	\$ -
(h) Admitted capital deferred tax assets (2e99 - 2f - 2g)	\$ -	\$ -	\$ -
(i) Admitted deferred tax assets (2d + 2h)	\$ 39,000	\$ 41,000	\$ (2,000)
3. Deferred Tax Liabilities:			
(a) Ordinary:			
(1) Investments	\$ -	\$ -	\$ -
(2) Fixed assets	\$ -	\$ -	\$ -
(3) Deferred and uncollected premium	\$ -	\$ -	\$ -
(4) Policyholder reserves	\$ -	\$ -	\$ -
(5) Other	\$ -	\$ -	\$ -
(99) Subtotal (3a1+3a2+3a3+3a4+3a5)	\$ -	\$ -	\$ -
(b) Capital:			
(1) Investments	\$ -	\$ -	\$ -
(2) Real estate	\$ -	\$ -	\$ -
(3) Other	\$ -	\$ -	\$ -
(99) Subtotal (3b1+3b2+3b3)	\$ -	\$ -	\$ -
(c) Deferred tax liabilities (3a99 + 3b99)	\$ -	\$ -	\$ -
4. Net deferred tax assets/liabilities (2i - 3c)	\$ 39,000	\$ 41,000	\$ (2,000)

The change in net deferred income taxes is comprised of the following (this analysis is exclusive of nonadmitted assets as the change in nonadmitted assets is reported separately from the change in net deferred income taxes in unassigned surplus):

	12/31/2024			12/31/2023			Change		
	(1) Ordinary	(2) Capital	(3) (Col. 1 + 2) Total	(4) Ordinary	(5) Capital	(6) (Col. 4 + 5) Total	(7) (Col. 1 - 4) Ordinary	(8) (Col. 2 - 5) Capital	(9) (Col. 7 + 8) Total
Total adjusted gross deferred tax assets	\$ 39,000	\$ -	\$ 39,000	\$ 41,000	\$ -	\$ 41,000	\$ (2,000)	\$ -	\$ (2,000)
Total deferred tax liabilities	\$ -	\$ -	\$ -	\$ -	\$ -	\$ -	\$ -	\$ -	\$ -
Net deferred tax asset (liability)	\$ 39,000	\$ -	\$ 39,000	\$ 41,000	\$ -	\$ 41,000	\$ (2,000)	\$ -	\$ (2,000)
Tax effect of unrealized gains									\$ -
Change in net deferred income tax									\$ (2,000)

NOTES TO FINANCIAL STATEMENTS

D. Reconciliation of Federal Income Tax Rate to Actual Effective Rate

Among the more significant book to tax adjustments were the following:

	12/31/2024
Provision computed at statutory rate	\$ (27,000)
Change in nonadmitted assets	\$ 41,000
Other/Rounding	\$ 1,000
Total	\$ 15,000
Federal income taxes incurred	\$ 13,000
Realized capital gains (losses) tax	\$ -
Change in net deferred income taxes	\$ 2,000
Total statutory income taxes	\$ 15,000

E. Operating Loss and Tax Credit Carryforwards and Protective Tax Deposits

- At December 31, 2024, the Company did not have any unused operating loss carryforwards available to offset against future taxable income.
- The following are income taxes in the current year and prior years that will be available for recoupment in the event of future net losses:

Year	Ordinary	Capital	Total
12/31/2024	\$ 12,000	\$ -	\$ 12,000
12/31/2023	\$ 49,000	\$ -	\$ 49,000
Total	\$ 61,000	\$ -	\$ 61,000

- The Company did not have any protective tax deposits under Section 6603 of the Internal Revenue Code.

F. Consolidated Federal Income Tax Return

- The Company's federal income tax return is consolidated with the following entities:

Wellmark, Inc. (Wellmark) - Parent
 Wellmark of South Dakota, Inc.
 Wellmark Health Plan of Iowa, Inc.
 First Administrators, LLC
 Midwest Benefit Consultants, LLC
 Wellmark Holdings, LLC
 Wellmark Synergy Health, Inc.

- The method of allocation between the companies is subject to a written agreement, approved by the Board of Directors and the Iowa Insurance Division. Allocation is based upon separate return calculations with current credit for net losses.

At December 31, 2024, the Company's tax related balance due to Wellmark, Inc. was \$12,534.

G. Federal or Foreign Income Tax Loss Contingencies

At December 31, 2024, the Company did not have any tax loss contingencies that will significantly increase or decrease within twelve months of the reporting date.

H. Repatriation Transition Tax (RTT)

Not Applicable

I. Alternative Minimum Tax (AMT) Credit

The Inflation Reduction Act was enacted on August 16, 2022, and included a new corporate alternative minimum tax (CAMT). The CAMT is effective for tax years beginning after December 31, 2022. The Company is not an "applicable corporation" for purposes of the CAMT and therefore does not expect to be liable for CAMT in 2024.

NOTE 10 Information Concerning Parent, Subsidiaries, Affiliates and Other Related Parties

A. Nature of the Relationship Involved

The Company is wholly owned by its parent company, Wellmark, Inc. (Wellmark), a mutual insurance company domiciled in the state of Iowa (NAIC Company #88848).

B. Description of Transactions

The Company issued an extraordinary dividend to Wellmark during 2024 in the amount of \$1,000,000. The Company did not issue a dividend to Wellmark during 2023.

C. Transactions with Related Parties Who Are Not Reported on Schedule Y

None

D. Amounts Due From or To Related Parties

At December 31, 2024, the Company reported \$21,078 due to Wellmark. At December 31, 2023, the Company reported \$965,288 due from Wellmark. Amounts due are settled monthly.

E. Material Management or Service Contracts and Cost-Sharing Arrangements - Not Applicable.

F. Guarantees or Undertakings - Not Applicable.

G. Nature of the Control Relationship

All outstanding shares of the Company are owned by Wellmark.

H. Amount Deducted from the Value of Upstream Intermediate Entity or Ultimate Parent Owned - Not Applicable.

NOTES TO FINANCIAL STATEMENTS

- I. Investments in SCA that Exceed 10% of Admitted Assets - Not Applicable.
- J. Investments in Impaired SCAs - Not Applicable.
- K. Investment in Foreign Insurance Subsidiary - Not Applicable.
- L. Investment in Downstream Noninsurance Holding Company - Not Applicable.
- M. All SCA Investments - Not Applicable.
- N. Investment in Insurance SCAs - Not Applicable.
- O. SCA or SSAP 48 Entity Loss Tracking - Not Applicable.

NOTE 11 Debt

Not Applicable.

NOTE 12 Retirement Plans, Deferred Compensation, Postemployment Benefits and Compensated Absences and Other Postretirement Benefit Plans

Not Applicable.

NOTE 13 Capital and Surplus, Dividend Restrictions and Quasi-Reorganizations

A. Number of Shares and Par or Stated Value of Each Class

During the first quarter of 2024, the Company redeemed 40,000 shares of outstanding stock from Wellmark, Inc. at \$100 per shares, at a total price of \$4,000,000. The redeemed shares were subsequently retired. As of December 31, 2024, the Company had 1,000,000 shares authorized; 10,000 shares issued and outstanding.

B. Dividend Rate, Liquidation Value and Redemption Schedule of Preferred Stock Issues - Not Applicable.

C. Dividend Restrictions

Without prior approval of its domiciliary commissioner, dividends to shareholders are limited to the greater of ten percent of surplus at December 31 of the prior year or net gain from operations for the twelve month period ending December 31 of the prior year.

D. Dates and Amounts of Dividends Paid

During the first quarter of 2024, an extraordinary dividend of \$1,000,000 was paid to Wellmark, Inc.

E. Profits that may be Paid as Ordinary Dividends to Stockholders

Within the limitations of (C) above, there are no restrictions placed on the portion of Company profits that may be paid as ordinary dividends to stockholders.

F. Restrictions Placed on Unassigned Funds (Surplus) - Not Applicable.

G. Amount of Advances to Surplus not Repaid - Not Applicable.

H. Amount of Stock Held for Special Purposes - Not Applicable.

I. Reasons for Changes in Balance of Special Surplus Funds from Prior Period - Not Applicable.

J. The Portion of Unassigned Funds (Surplus) Represented or Reduced by Unrealized Gains and Losses is: \$0.

K. The Reporting Entity Issued the Following Surplus Debentures or Similar Obligations - Not Applicable.

L. The impact of any restatement due to prior quasi-reorganizations is as follows - Not Applicable.

M. Effective Date of Quasi-Reorganization for a Period of Ten Years Following Reorganization - Not Applicable.

NOTE 14 Liabilities, Contingencies and Assessments

A. Contingent Commitments

- (1) The Company is required by licensure requirements of the Blue Cross and Blue Shield Association to execute parental guarantees pursuant to which Wellmark guarantees to the full extent of its assets all contractual and financial obligations of the Company to its customers.

Through a parental guarantee executed between the Company and Wellmark, Wellmark guarantees the Company is in compliance with the Iowa statutory minimum for HMO capital and surplus of \$1,000,000 or the statutory minimum for risk-based capital for health organizations, whichever is greater.

- (2) Detail of other contingent commitments - Not Applicable.

- (3) Guarantee Obligations - Not Applicable.

B. Assessments - Not Applicable.

C. Gain Contingencies - Not Applicable.

D. Claims related extra contractual obligations and bad faith losses stemming from lawsuits - Not Applicable.

E. Joint and Several Liabilities - Not Applicable.

F. All Other Contingencies

In the ordinary course of business, the Company may be involved in and subject to claims, contractual disputes and other uncertainties. Management believes that any liability that could result will not materially affect its financial position.

NOTES TO FINANCIAL STATEMENTS

NOTE 15 Leases

Not Applicable.

NOTE 16 Information About Financial Instruments With Off-Balance Sheet Risk and Financial Instruments With Concentrations of Credit Risk

Not Applicable.

NOTE 17 Sale, Transfer and Servicing of Financial Assets and Extinguishments of Liabilities

Not Applicable.

NOTE 18 Gain or Loss to the Reporting Entity from Uninsured Plans and the Uninsured Portion of Partially Insured Plans

A. ASO Plans - Not Applicable.

B. ASC Plans:

The loss from operations from Administrative Services Contract (ASC) uninsured plans and the uninsured portion of partially insured plans was as follows during 2024:

	ASC Uninsured Plans	Uninsured Portion of Partially Insured Plans	Total ASC
a. Gross reimbursement for medical cost incurred	\$ (9,082)	\$ -	\$ (9,082)
b. Gross administrative fees accrued	\$ 864	\$ -	\$ 864
c. Other income or expenses (including interest paid to or received from plans)	\$ -	\$ -	\$ -
d. Gross expenses incurred (claims and administrative) (a+b+c)	\$ (8,218)	\$ -	\$ (8,218)
e. Total net gain or loss from operations	\$ (244,686)	\$ -	\$ (244,686)

C. Medicare or Similarly Structured Cost Based Reimbursement Contract - Not Applicable.

NOTE 19 Direct Premium Written/Produced by Managing General Agents/Third Party Administrators

Not Applicable.

NOTE 20 Fair Value Measurements

Not Applicable.

NOTE 21 Other Items

Not Applicable.

NOTE 22 Events Subsequent

Type I – Recognized Subsequent Events:

Subsequent events have been considered through February 25, 2025 for the statutory statement issued on March 1, 2025.

Type II – Nonrecognized Subsequent Events:

Subsequent events have been considered through February 25, 2025 for the statutory statement issued on March 1, 2025.

NOTE 23 Reinsurance

Not Applicable.

NOTE 24 Retrospectively Rated Contracts & Contracts Subject to Redetermination

Not Applicable.

NOTE 25 Change in Incurred Claims and Claim Adjustment Expenses

Not Applicable.

NOTE 26 Intercompany Pooling Arrangements

Not Applicable.

NOTE 27 Structured Settlements

Not Applicable.

NOTE 28 Health Care Receivables

Not Applicable.

NOTE 29 Participating Policies

Not Applicable.

NOTES TO FINANCIAL STATEMENTS

NOTE 30 Premium Deficiency Reserves

Not Applicable.

NOTE 31 Anticipated Salvage and Subrogation

Not Applicable.

GENERAL INTERROGATORIES

PART 1 - COMMON INTERROGATORIES GENERAL

- 1.1 Is the reporting entity a member of an Insurance Holding Company System consisting of two or more affiliated persons, one or more of which is an insurer? Yes [X] No []
If yes, complete Schedule Y, Parts 1, 1A, 2 and 3.
- 1.2 If yes, did the reporting entity register and file with its domiciliary State Insurance Commissioner, Director or Superintendent or with such regulatory official of the state of domicile of the principal insurer in the Holding Company System, a registration statement providing disclosure substantially similar to the standards adopted by the National Association of Insurance Commissioners (NAIC) in its Model Insurance Holding Company System Regulatory Act and model regulations pertaining thereto, or is the reporting entity subject to standards and disclosure requirements substantially similar to those required by such Act and regulations? Yes [X] No [] N/A []
- 1.3 State Regulating? Iowa
- 1.4 Is the reporting entity publicly traded or a member of a publicly traded group? Yes [] No [X]
- 1.5 If the response to 1.4 is yes, provide the CIK (Central Index Key) code issued by the SEC for the entity/group.
- 2.1 Has any change been made during the year of this statement in the charter, by-laws, articles of incorporation, or deed of settlement of the reporting entity? Yes [] No [X]
- 2.2 If yes, date of change:
- 3.1 State as of what date the latest financial examination of the reporting entity was made or is being made. 12/31/2021
- 3.2 State the as of date that the latest financial examination report became available from either the state of domicile or the reporting entity. This date should be the date of the examined balance sheet and not the date the report was completed or released. 12/31/2021
- 3.3 State as of what date the latest financial examination report became available to other states or the public from either the state of domicile or the reporting entity. This is the release date or completion date of the examination report and not the date of the examination (balance sheet date). 03/20/2023
- 3.4 By what department or departments?
Iowa Insurance Division
- 3.5 Have all financial statement adjustments within the latest financial examination report been accounted for in a subsequent financial statement filed with Departments? Yes [] No [] N/A [X]
- 3.6 Have all of the recommendations within the latest financial examination report been complied with? Yes [] No [] N/A [X]
- 4.1 During the period covered by this statement, did any agent, broker, sales representative, non-affiliated sales/service organization or any combination thereof under common control (other than salaried employees of the reporting entity) receive credit or commissions for or control a substantial part (more than 20 percent of any major line of business measured on direct premiums) of:
4.11 sales of new business? Yes [] No [X]
4.12 renewals? Yes [] No [X]
- 4.2 During the period covered by this statement, did any sales/service organization owned in whole or in part by the reporting entity or an affiliate, receive credit or commissions for or control a substantial part (more than 20 percent of any major line of business measured on direct premiums) of:
4.21 sales of new business? Yes [] No [X]
4.22 renewals? Yes [] No [X]
- 5.1 Has the reporting entity been a party to a merger or consolidation during the period covered by this statement? Yes [] No [X]
If yes, complete and file the merger history data file with the NAIC.
- 5.2 If yes, provide the name of the entity, NAIC company code, and state of domicile (use two letter state abbreviation) for any entity that has ceased to exist as a result of the merger or consolidation.

1 Name of Entity	2 NAIC Company Code	3 State of Domicile

- 6.1 Has the reporting entity had any Certificates of Authority, licenses or registrations (including corporate registration, if applicable) suspended or revoked by any governmental entity during the reporting period? Yes [] No [X]
- 6.2 If yes, give full information
.....
- 7.1 Does any foreign (non-United States) person or entity directly or indirectly control 10% or more of the reporting entity? Yes [] No [X]
- 7.2 If yes,
7.21 State the percentage of foreign control %
7.22 State the nationality(s) of the foreign person(s) or entity(s); or if the entity is a mutual or reciprocal, the nationality of its manager or attorney-in-fact and identify the type of entity(s) (e.g., individual, corporation, government, manager or attorney-in-fact).

1 Nationality	2 Type of Entity

GENERAL INTERROGATORIES

- 8.1 Is the company a subsidiary of a depository institution holding company (DIHC) or a DIHC itself, regulated by the Federal Reserve Board? Yes [] No [X]
- 8.2 If the response to 8.1 is yes, please identify the name of the DIHC.
.....
- 8.3 Is the company affiliated with one or more banks, thrifts or securities firms? Yes [] No [X]
- 8.4 If response to 8.3 is yes, please provide below the names and locations (city and state of the main office) of any affiliates regulated by a federal financial regulatory services agency [i.e. the Federal Reserve Board (FRB), the Office of the Comptroller of the Currency (OCC), the Federal Deposit Insurance Corporation (FDIC) and the Securities Exchange Commission (SEC)] and identify the affiliate's primary federal regulator.

1 Affiliate Name	2 Location (City, State)	3 FRB	4 OCC	5 FDIC	6 SEC

- 8.5 Is the reporting entity a depository institution holding company with significant insurance operations as defined by the Board of Governors of Federal Reserve System or a subsidiary of the depository institution holding company? Yes [] No [X]
- 8.6 If response to 8.5 is no, is the reporting entity a company or subsidiary of a company that has otherwise been made subject to the Federal Reserve Board's capital rule? Yes [] No [X] N/A []
- 9. What is the name and address of the independent certified public accountant or accounting firm retained to conduct the annual audit?
Not applicable. The Company has \$0 in written premiums and is in run-off.
- 10.1 Has the insurer been granted any exemptions to the prohibited non-audit services provided by the certified independent public accountant requirements as allowed in Section 7H of the Annual Financial Reporting Model Regulation (Model Audit Rule), or substantially similar state law or regulation? Yes [] No [X]
- 10.2 If the response to 10.1 is yes, provide information related to this exemption:
.....
- 10.3 Has the insurer been granted any exemptions related to the other requirements of the Annual Financial Reporting Model Regulation as allowed for in Section 18A of the Model Regulation, or substantially similar state law or regulation? Yes [] No [X]
- 10.4 If the response to 10.3 is yes, provide information related to this exemption:
.....
- 10.5 Has the reporting entity established an Audit Committee in compliance with the domiciliary state insurance laws? Yes [X] No [] N/A []
- 10.6 If the response to 10.5 is no or n/a, please explain.
.....
- 11. What is the name, address and affiliation (officer/employee of the reporting entity or actuary/consultant associated with an actuarial consulting firm) of the individual providing the statement of actuarial opinion/certification?
Not applicable. The Company has received an exception to file the Actuarial Opinion from the Iowa Insurance Division.
- 12.1 Does the reporting entity own any securities of a real estate holding company or otherwise hold real estate indirectly? Yes [] No [X]
 - 12.11 Name of real estate holding company ...
 - 12.12 Number of parcels involved
 - 12.13 Total book/adjusted carrying value \$
- 12.2 If yes, provide explanation
.....
- 13. **FOR UNITED STATES BRANCHES OF ALIEN REPORTING ENTITIES ONLY:**
- 13.1 What changes have been made during the year in the United States manager or the United States trustees of the reporting entity?
.....
- 13.2 Does this statement contain all business transacted for the reporting entity through its United States Branch on risks wherever located? Yes [] No []
- 13.3 Have there been any changes made to any of the trust indentures during the year? Yes [] No []
- 13.4 If answer to (13.3) is yes, has the domiciliary or entry state approved the changes? Yes [] No [] N/A []
- 14.1 Are the senior officers (principal executive officer, principal financial officer, principal accounting officer or controller, or persons performing similar functions) of the reporting entity subject to a code of ethics, which includes the following standards? Yes [X] No []
 - a. Honest and ethical conduct, including the ethical handling of actual or apparent conflicts of interest between personal and professional relationships;
 - b. Full, fair, accurate, timely and understandable disclosure in the periodic reports required to be filed by the reporting entity;
 - c. Compliance with applicable governmental laws, rules and regulations;
 - d. The prompt internal reporting of violations to an appropriate person or persons identified in the code; and
 - e. Accountability for adherence to the code.
- 14.11 If the response to 14.1 is No, please explain:
.....
- 14.2 Has the code of ethics for senior managers been amended? Yes [] No [X]
- 14.21 If the response to 14.2 is yes, provide information related to amendment(s).
.....
- 14.3 Have any provisions of the code of ethics been waived for any of the specified officers? Yes [] No [X]
- 14.31 If the response to 14.3 is yes, provide the nature of any waiver(s).
.....

GENERAL INTERROGATORIES

- 15.1 Is the reporting entity the beneficiary of a Letter of Credit that is unrelated to reinsurance where the issuing or confirming bank is not on the SVO Bank List? Yes [] No [X]
- 15.2 If the response to 15.1 is yes, indicate the American Bankers Association (ABA) Routing Number and the name of the issuing or confirming bank of the Letter of Credit and describe the circumstances in which the Letter of Credit is triggered.

1 American Bankers Association (ABA) Routing Number	2 Issuing or Confirming Bank Name	3 Circumstances That Can Trigger the Letter of Credit	4 Amount

BOARD OF DIRECTORS

16. Is the purchase or sale of all investments of the reporting entity passed upon either by the board of directors or a subordinate committee thereof? Yes [X] No []
17. Does the reporting entity keep a complete permanent record of the proceedings of its board of directors and all subordinate committees thereof? Yes [X] No []
18. Has the reporting entity an established procedure for disclosure to its board of directors or trustees of any material interest or affiliation on the part of any of its officers, directors, trustees or responsible employees that is in conflict or is likely to conflict with the official duties of such person? Yes [X] No []

FINANCIAL

19. Has this statement been prepared using a basis of accounting other than Statutory Accounting Principles (e.g., Generally Accepted Accounting Principles)? Yes [] No [X]
- 20.1 Total amount loaned during the year (inclusive of Separate Accounts, exclusive of policy loans):
- 20.11 To directors or other officers.....\$
 - 20.12 To stockholders not officers.....\$
 - 20.13 Trustees, supreme or grand (Fraternal Only)\$
- 20.2 Total amount of loans outstanding at the end of year (inclusive of Separate Accounts, exclusive of policy loans):
- 20.21 To directors or other officers.....\$
 - 20.22 To stockholders not officers.....\$
 - 20.23 Trustees, supreme or grand (Fraternal Only)\$
- 21.1 Were any assets reported in this statement subject to a contractual obligation to transfer to another party without the liability for such obligation being reported in the statement? Yes [] No [X]
- 21.2 If yes, state the amount thereof at December 31 of the current year:
- 21.21 Rented from others.....\$
 - 21.22 Borrowed from others.....\$
 - 21.23 Leased from others\$
 - 21.24 Other\$
- 22.1 Does this statement include payments for assessments as described in the Annual Statement Instructions other than guaranty fund or guaranty association assessments? Yes [] No [X]
- 22.2 If answer is yes:
- 22.21 Amount paid as losses or risk adjustment \$
 - 22.22 Amount paid as expenses\$
 - 22.23 Other amounts paid\$
- 23.1 Does the reporting entity report any amounts due from parent, subsidiaries or affiliates on Page 2 of this statement? Yes [] No [X]
- 23.2 If yes, indicate any amounts receivable from parent included in the Page 2 amount:\$
- 24.1 Does the insurer utilize third parties to pay agent commissions in which the amounts advanced by the third parties are not settled in full within 90 days? Yes [] No [X]
- 24.2 If the response to 24.1 is yes, identify the third-party that pays the agents and whether they are a related party.

Name of Third-Party	Is the Third-Party Agent a Related Party (Yes/No)

INVESTMENT

- 25.01 Were all the stocks, bonds and other securities owned December 31 of current year, over which the reporting entity has exclusive control, in the actual possession of the reporting entity on said date? (other than securities lending programs addressed in 25.03)..... Yes [X] No []

GENERAL INTERROGATORIES

- 25.02 If no, give full and complete information, relating thereto
.....
- 25.03 For securities lending programs, provide a description of the program including value for collateral and amount of loaned securities, and whether collateral is carried on or off-balance sheet. (an alternative is to reference Note 17 where this information is also provided)
.....
- 25.04 For the reporting entity's securities lending program, report amount of collateral for conforming programs as outlined in the Risk-Based Capital Instructions. \$
- 25.05 For the reporting entity's securities lending program, report amount of collateral for other programs. \$
- 25.06 Does your securities lending program require 102% (domestic securities) and 105% (foreign securities) from the counterparty at the outset of the contract? Yes [] No [] N/A [X]
- 25.07 Does the reporting entity non-admit when the collateral received from the counterparty falls below 100%? Yes [] No [] N/A [X]
- 25.08 Does the reporting entity or the reporting entity's securities lending agent utilize the Master Securities lending Agreement (MSLA) to conduct securities lending? Yes [] No [] N/A [X]
- 25.09 For the reporting entity's securities lending program state the amount of the following as of December 31 of the current year:
- 25.091 Total fair value of reinvested collateral assets reported on Schedule DL, Parts 1 and 2 \$0
- 25.092 Total book/adjusted carrying value of reinvested collateral assets reported on Schedule DL, Parts 1 and 2 \$0
- 25.093 Total payable for securities lending reported on the liability page \$0

- 26.1 Were any of the stocks, bonds or other assets of the reporting entity owned at December 31 of the current year not exclusively under the control of the reporting entity or has the reporting entity sold or transferred any assets subject to a put option contract that is currently in force? (Exclude securities subject to Interrogatory 21.1 and 25.03). Yes [] No [X]
- 26.2 If yes, state the amount thereof at December 31 of the current year:
- 26.21 Subject to repurchase agreements \$0
- 26.22 Subject to reverse repurchase agreements \$0
- 26.23 Subject to dollar repurchase agreements \$0
- 26.24 Subject to reverse dollar repurchase agreements \$0
- 26.25 Placed under option agreements \$0
- 26.26 Letter stock or securities restricted as to sale - excluding FHLB Capital Stock \$0
- 26.27 FHLB Capital Stock \$0
- 26.28 On deposit with states \$0
- 26.29 On deposit with other regulatory bodies \$0
- 26.30 Pledged as collateral - excluding collateral pledged to an FHLB \$0
- 26.31 Pledged as collateral to FHLB - including assets backing funding agreements \$0
- 26.32 Other \$0

26.3 For category (26.26) provide the following:

1 Nature of Restriction	2 Description	3 Amount
.....

- 27.1 Does the reporting entity have any hedging transactions reported on Schedule DB? Yes [] No [X]
- 27.2 If yes, has a comprehensive description of the hedging program been made available to the domiciliary state? Yes [] No [] N/A [X]
If no, attach a description with this statement.

LINES 27.3 through 27.5: FOR LIFE/FRATERNAL REPORTING ENTITIES ONLY:

- 27.3 Does the reporting entity utilize derivatives to hedge variable annuity guarantees subject to fluctuations as a result of interest rate sensitivity? Yes [] No []
- 27.4 If the response to 27.3 is YES, does the reporting entity utilize:
- 27.41 Special accounting provision of SSAP No. 108 Yes [] No []
- 27.42 Permitted accounting practice Yes [] No []
- 27.43 Other accounting guidance Yes [] No []
- 27.5 By responding YES to 27.41 regarding utilizing the special accounting provisions of SSAP No. 108, the reporting entity attests to the following: Yes [] No []
- The reporting entity has obtained explicit approval from the domiciliary state.
 - Hedging strategy subject to the special accounting provisions is consistent with the requirements of VM-21.
 - Actuarial certification has been obtained which indicates that the hedging strategy is incorporated within the establishment of VM-21 reserves and provides the impact of the hedging strategy within the Actuarial Guideline Conditional Tail Expectation Amount.
 - Financial Officer Certification has been obtained which indicates that the hedging strategy meets the definition of a Clearly Defined Hedging Strategy within VM-21 and that the Clearly Defined Hedging Strategy is the hedging strategy being used by the company in its actual day-to-day risk mitigation efforts.
- 28.1 Were any preferred stocks or bonds owned as of December 31 of the current year mandatorily convertible into equity, or, at the option of the issuer, convertible into equity? Yes [] No [X]
- 28.2 If yes, state the amount thereof at December 31 of the current year. \$
29. Excluding items in Schedule E, Part 3 - Special Deposits, real estate, mortgage loans and investments held physically in the reporting entity's offices, vaults or safety deposit boxes, were all stocks, bonds and other securities, owned throughout the current year held pursuant to a custodial agreement with a qualified bank or trust company in accordance with Section 1, III - General Examination Considerations, F. Outsourcing of Critical Functions, Custodial or Safekeeping Agreements of the NAIC Financial Condition Examiners Handbook? Yes [] No [X]

29.01 For agreements that comply with the requirements of the NAIC Financial Condition Examiners Handbook, complete the following:

1 Name of Custodian(s)	2 Custodian's Address
The Company only held cash as of December 31, 2024.

ANNUAL STATEMENT FOR THE YEAR 2024 OF THE Wellmark Value Health Plan, Inc.

GENERAL INTERROGATORIES

29.02 For all agreements that do not comply with the requirements of the NAIC Financial Condition Examiners Handbook, provide the name, location and a complete explanation:

1 Name(s)	2 Location(s)	3 Complete Explanation(s)

29.03 Have there been any changes, including name changes, in the custodian(s) identified in 29.01 during the current year?..... Yes [] No [X]

29.04 If yes, give full and complete information relating thereto:

1 Old Custodian	2 New Custodian	3 Date of Change	4 Reason

29.05 Investment management – Identify all investment advisors, investment managers, broker/dealers, including individuals that have the authority to make investment decisions on behalf of the reporting entity. This includes both primary and sub-advisors. For assets that are managed internally by employees of the reporting entity, note as such. ["...that have access to the investment accounts"; "...handle securities"]

1 Name of Firm or Individual	2 Affiliation
Wellmark Value Health Plan, Inc.	I.....

29.0597 For those firms/individuals listed in the table for Question 29.05, do any firms/individuals unaffiliated with the reporting entity (i.e., designated with a "U") manage more than 10% of the reporting entity's invested assets?..... Yes [] No [X]

29.0598 For firms/individuals unaffiliated with the reporting entity (i.e., designated with a "U") listed in the table for Question 29.05, does the total assets under management aggregate to more than 50% of the reporting entity's invested assets?..... Yes [] No [X]

29.06 For those firms or individuals listed in the table for 29.05 with an affiliation code of "A" (affiliated) or "U" (unaffiliated), provide the information for the table below.

1 Central Registration Depository Number	2 Name of Firm or Individual	3 Legal Entity Identifier (LEI)	4 Registered With	5 Investment Management Agreement (IMA) Filed

30.1 Does the reporting entity have any diversified mutual funds reported in Schedule D - Part 2 (diversified according to the Securities and Exchange Commission (SEC) in the Investment Company Act of 1940 [Section 5(b)(1)])? Yes [] No [X]

30.2 If yes, complete the following schedule:

1 CUSIP #	2 Name of Mutual Fund	3 Book/Adjusted Carrying Value
30.2999 - Total		0

30.3 For each mutual fund listed in the table above, complete the following schedule:

1 Name of Mutual Fund (from above table)	2 Name of Significant Holding of the Mutual Fund	3 Amount of Mutual Fund's Book/Adjusted Carrying Value Attributable to the Holding	4 Date of Valuation

GENERAL INTERROGATORIES

31. Provide the following information for all short-term and long-term bonds and all preferred stocks. Do not substitute amortized value or statement value for fair value.

	1	2	3
	Statement (Admitted) Value	Fair Value	Excess of Statement over Fair Value (-), or Fair Value over Statement (+)
31.1 Bonds			0
31.2 Preferred stocks	0		0
31.3 Totals	0	0	0

31.4 Describe the sources or methods utilized in determining the fair values:

Not Applicable

32.1 Was the rate used to calculate fair value determined by a broker or custodian for any of the securities in Schedule D? Yes [] No []

32.2 If the answer to 32.1 is yes, does the reporting entity have a copy of the broker's or custodian's pricing policy (hard copy or electronic copy) for all brokers or custodians used as a pricing source? Yes [] No []

32.3 If the answer to 32.2 is no, describe the reporting entity's process for determining a reliable pricing source for purposes of disclosure of fair value for Schedule D:

33.1 Have all the filing requirements of the Purposes and Procedures Manual of the NAIC Investment Analysis Office been followed? Yes [X] No []

33.2 If no, list exceptions:

34. By self-designating 5GI securities, the reporting entity is certifying the following elements of each self-designated 5GI security:

- a. Documentation necessary to permit a full credit analysis of the security does not exist or an NAIC CRP credit rating for an FE or PL security is not available.
- b. Issuer or obligor is current on all contracted interest and principal payments.
- c. The insurer has an actual expectation of ultimate payment of all contracted interest and principal.

Has the reporting entity self-designated 5GI securities? Yes [] No [X]

35. By self-designating PLGI securities, the reporting entity is certifying its compliance with the requirements as specified in the Purposes and Procedures Manual of the NAIC Investment Analysis Office (P&P Manual) for private letter rating (PLR) securities and the following elements of each self-designated PLGI security:

- a. The security was either:
 - i. issued prior to January 1, 2018 (which is exempt from PLR filing requirements pursuant to the P&P Manual), or
 - ii. issued from January 1, 2018 to December 31, 2021 and subject to a confidentiality agreement executed prior to January 1, 2022 which confidentiality agreement remains in force, for which an insurance company cannot provide a copy of a private letter rating rationale report to the SVO due to confidentiality or other contractual reasons ("waived submission PLR securities").
- b. The reporting entity is holding capital commensurate with the NAIC Designation and NAIC Designation Category reported for the security.
- c. The NAIC Designation and NAIC Designation Category were derived from the credit rating assigned by an NAIC CRP in its legal capacity as a NRSRO which is shown on a current private letter rating, dated during the financial statement year, held by the insurer and available for examination by state insurance regulators.
- d. Other than for waived submission PLR securities, defined above, on or after January 1, 2024 for any PLR securities issued on or after January 1, 2022, if the reporting entity is not permitted to share this private credit rating or the private rating letter rationale report of the PL security with the SVO, it certifies that it is reporting it as an NAIC 5.B GI and may not assign any other self-designation.

Has the reporting entity self-designated PLGI to securities, all of which meet the above requirement and as specified in the P&P Manual? Yes [] No [X]

36. By assigning FE to a Schedule BA non-registered private fund, the reporting entity is certifying the following elements of each self-designated FE fund:

- a. The shares were purchased prior to January 1, 2019.
- b. The reporting entity is holding capital commensurate with the NAIC Designation reported for the security.
- c. The security had a public credit rating(s) with annual surveillance assigned by an NAIC CRP in its legal capacity as an NRSRO prior to January 1, 2019.
- d. The fund only or predominantly holds bonds in its portfolio.
- e. The current reported NAIC Designation was derived from the public credit rating(s) with annual surveillance assigned by an NAIC CRP in its legal capacity as an NRSRO.
- f. The public credit rating(s) with annual surveillance assigned by an NAIC CRP has not lapsed.

Has the reporting entity assigned FE to Schedule BA non-registered private funds that complied with the above criteria? Yes [] No [X]

37. By rolling/renewing short-term or cash equivalent investments with continued reporting on Schedule DA, Part 1 or Schedule E Part 2 (identified through a code (%) in those investment schedules), the reporting entity is certifying to the following:

- a. The investment is a liquid asset that can be terminated by the reporting entity on the current maturity date.
- b. If the investment is with a nonrelated party or nonaffiliate, then it reflects an arms-length transaction with renewal completed at the discretion of all involved parties.
- c. If the investment is with a related party or affiliate, then the reporting entity has completed robust re-underwriting of the transaction for which documentation is available for regulator review.
- d. Short-term and cash equivalent investments that have been renewed/rolled from the prior period that do not meet the criteria in 37.a - 37.c are reported as long-term investments.

Has the reporting entity rolled/renewed short-term or cash equivalent investments in accordance with these criteria? Yes [] No [] N/A [X]

GENERAL INTERROGATORIES

38.1 Does the reporting entity directly hold cryptocurrencies? Yes [] No [X]

38.2 If the response to 38.1 is yes, on what schedule are they reported?
.....

39.1 Does the reporting entity directly or indirectly accept cryptocurrencies as payments for premiums on policies? Yes [] No [X]

39.2 If the response to 39.1 is yes, are the cryptocurrencies held directly or are they immediately converted to U.S. dollars?
 39.21 Held directly Yes [] No []
 39.22 Immediately converted to U.S. dollars Yes [] No []

39.3 If the response to 38.1 or 39.1 is yes, list all cryptocurrencies accepted for payments of premiums or that are held directly.

1 Name of Cryptocurrency	2 Immediately Converted to USD, Directly Held, or Both	3 Accepted for Payment of Premiums

OTHER

40.1 Amount of payments to trade associations, service organizations and statistical or rating bureaus, if any?\$0

40.2 List the name of the organization and the amount paid if any such payment represented 25% or more of the total payments to trade associations, service organizations, and statistical or rating bureaus during the period covered by this statement.

1 Name	2 Amount Paid

41.1 Amount of payments for legal expenses, if any?\$ 327

41.2 List the name of the firm and the amount paid if any such payment represented 25% or more of the total payments for legal expenses during the period covered by this statement.

1 Name	2 Amount Paid
CT Corporation	327

42.1 Amount of payments for expenditures in connection with matters before legislative bodies, officers, or departments of government, if any?\$0

42.2 List the name of the firm and the amount paid if any such payment represented 25% or more of the total payment expenditures in connection with matters before legislative bodies, officers, or departments of government during the period covered by this statement.

1 Name	2 Amount Paid

GENERAL INTERROGATORIES

PART 2 - HEALTH INTERROGATORIES

1.1 Does the reporting entity have any direct Medicare Supplement Insurance in force? Yes [] No [X]

1.2 If yes, indicate premium earned on U.S. business only. \$ _____

1.3 What portion of Item (1.2) is not reported on the Medicare Supplement Insurance Experience Exhibit? \$ _____

1.31 Reason for excluding
.....

1.4 Indicate amount of earned premium attributable to Canadian and/or Other Alien not included in Item (1.2) above \$ _____

1.5 Indicate total incurred claims on all Medicare Supplement Insurance. \$ _____ 0

1.6 Individual policies: Most current three years:

1.61 Total premium earned \$ 0

1.62 Total incurred claims \$ 0

1.63 Number of covered lives 0

All years prior to most current three years:

1.64 Total premium earned \$ 0

1.65 Total incurred claims \$ 0

1.66 Number of covered lives 0

1.7 Group policies: Most current three years:

1.71 Total premium earned \$ 0

1.72 Total incurred claims \$ 0

1.73 Number of covered lives 0

All years prior to most current three years:

1.74 Total premium earned \$ 0

1.75 Total incurred claims \$ 0

1.76 Number of covered lives 0

2. Health Test:

		1	2	
		Current Year	Prior Year	
2.1	Premium Numerator	0	2,391	
2.2	Premium Denominator	0	2,391	
2.3	Premium Ratio (2.1/2.2)	0.000	1.000	
2.4	Reserve Numerator	0	0	
2.5	Reserve Denominator	0	0	
2.6	Reserve Ratio (2.4/2.5)	0.000	0.000	

3.1 Has the reporting entity received any endowment or gift from contracting hospitals, physicians, dentists, or others that is agreed will be returned when, as and if the earnings of the reporting entity permits? Yes [] No [X]

3.2 If yes, give particulars:
.....

4.1 Have copies of all agreements stating the period and nature of hospitals', physicians', and dentists' care offered to subscribers and dependents been filed with the appropriate regulatory agency? Yes [] No [X]

4.2 If not previously filed, furnish herewith a copy(ies) of such agreement(s). Do these agreements include additional benefits offered? Yes [] No [X]

5.1 Does the reporting entity have stop-loss reinsurance? Yes [] No [X]

5.2 If no, explain:
As of January 1, 2021, the Company no longer offered contracts for covered health care services.

5.3 Maximum retained risk (see instructions)

5.31 Comprehensive Medical \$

5.32 Medical Only \$

5.33 Medicare Supplement \$

5.34 Dental & Vision \$

5.35 Other Limited Benefit Plan \$

5.36 Other \$

6. Describe arrangement which the reporting entity may have to protect subscribers and their dependents against the risk of insolvency including hold harmless provisions, conversion privileges with other carriers, agreements with providers to continue rendering services, and any other agreements:
As of January 1, 2021, the Company no longer offered contracts for covered health care services.

7.1 Does the reporting entity set up its claim liability for provider services on a service date basis?..... Yes [] No [X]

7.2 If no, give details
As of January 1, 2021, the Company no longer offered contracts for covered health care services.

8. Provide the following information regarding participating providers: 8.1 Number of providers at start of reporting year
8.2 Number of providers at end of reporting year

9.1 Does the reporting entity have business subject to premium rate guarantees? Yes [] No [X]

9.2 If yes, direct premium earned: 9.21 Business with rate guarantees between 15-36 months.. \$.....
9.22 Business with rate guarantees over 36 months \$.....

GENERAL INTERROGATORIES

10.1 Does the reporting entity have Incentive Pool, Withhold or Bonus Arrangements in its provider contracts? Yes [] No [X]

10.2 If yes:

10.21 Maximum amount payable bonuses.....\$

10.22 Amount actually paid for year bonuses.....\$

10.23 Maximum amount payable withholds.....\$

10.24 Amount actually paid for year withholds.....\$

11.1 Is the reporting entity organized as:

11.12 A Medical Group/Staff Model, Yes [] No [X]

11.13 An Individual Practice Association (IPA), or, Yes [] No [X]

11.14 A Mixed Model (combination of above)? Yes [] No [X]

11.2 Is the reporting entity subject to Statutory Minimum Capital and Surplus Requirements? Yes [X] No []

11.3 If yes, show the name of the state requiring such minimum capital and surplus. Iowa

11.4 If yes, show the amount required. \$ 1,000,000

11.5 Is this amount included as part of a contingency reserve in stockholder's equity? Yes [] No [X]

11.6 If the amount is calculated, show the calculation

.....

12. List service areas in which reporting entity is licensed to operate:

1 Name of Service Area
Iowa
.....

13.1 Do you act as a custodian for health savings accounts? Yes [] No [X]

13.2 If yes, please provide the amount of custodial funds held as of the reporting date. \$

13.3 Do you act as an administrator for health savings accounts? Yes [] No [X]

13.4 If yes, please provide the balance of funds administered as of the reporting date. \$

14.1 Are any of the captive affiliates reported on Schedule S, Part 3, authorized reinsurers? Yes [] No [] N/A [X]

14.2 If the answer to 14.1 is yes, please provide the following:

1 Company Name	2 NAIC Company Code	3 Domiciliary Jurisdiction	4 Reserve Credit	Assets Supporting Reserve Credit		
				5 Letters of Credit	6 Trust Agreements	7 Other
.....

15. Provide the following for individual ordinary life insurance* policies (U.S. business only) for the current year (prior to reinsurance assumed or ceded):

15.1 Direct Premium Written \$

15.2 Total Incurred Claims \$

15.3 Number of Covered Lives

*Ordinary Life Insurance Includes
Term(whether full underwriting, limited underwriting, jet issue, "short form app")
Whole Life (whether full underwriting, limited underwriting, jet issue, "short form app")
Variable Life (with or without secondary gurarantee)
Universal Life (with or without secondary gurarantee)
Variable Universal Life (with or without secondary gurarantee)

16. Is the reporting entity licensed or chartered, registered, qualified, eligible or writing business in at least two states? Yes [] No [X]

16.1 If no, does the reporting entity assume reinsurance business that covers risks residing in at least one state other than the state of domicile of the reporting entity? Yes [] No [X]

ANNUAL STATEMENT FOR THE YEAR 2024 OF THE Wellmark Value Health Plan, Inc.

FIVE-YEAR HISTORICAL DATA

	1 2024	2 2023	3 2022	4 2021	5 2020
Balance Sheet (Pages 2 and 3)					
1. Total admitted assets (Page 2, Line 28)	2,140,417	7,086,595	7,144,359	6,758,136	18,809,024
2. Total liabilities (Page 3, Line 24)	34,474	31,413	151,116	614,664	7,152,926
3. Statutory minimum capital and surplus requirement	1,000,000	1,000,000	1,000,000	1,000,000	1,000,000
4. Total capital and surplus (Page 3, Line 33)	2,105,943	7,055,182	6,993,243	6,143,472	11,656,098
Income Statement (Page 4)					
5. Total revenues (Line 8)	0	2,391	14,358	193,286	17,085,402
6. Total medical and hospital expenses (Line 18)	0	(60,985)	(501,837)	606,821	9,155,830
7. Claims adjustment expenses (Line 20)	0	(65,344)	(65,773)	(82,741)	310,134
8. Total administrative expenses (Line 21)	251,025	190,986	(320,077)	(444,638)	1,647,127
9. Net underwriting gain (loss) (Line 24)	(251,025)	(62,266)	902,045	113,844	5,972,311
10. Net investment gain (loss) (Line 27)	151,968	295,077	111,419	15,102	119,231
11. Total other income (Lines 28 plus 29)	(30,725)	0	0	0	0
12. Net income or (loss) (Line 32)	(142,782)	183,811	800,464	105,946	4,821,542
Cash Flow (Page 6)					
13. Net cash from operations (Line 11)	100,273	1,277,902	826,273	(4,672,422)	(2,902,728)
Risk-Based Capital Analysis					
14. Total adjusted capital	2,105,943	7,055,182	6,993,243	6,143,472	11,656,098
15. Authorized control level risk-based capital	3,568	779,833	794,371	796,636	815,515
Enrollment (Exhibit 1)					
16. Total members at end of period (Column 5, Line 7)			0		2,033
17. Total members months (Column 6, Line 7)			0	2,250	25,905
Operating Percentage (Page 4) (Item divided by Page 4, sum of Lines 2, 3 and 5) x 100.0					
18. Premiums earned plus risk revenue (Line 2 plus Lines 3 and 5)	100.0	100.0	100.0	100.0	100.0
19. Total hospital and medical plus other non-health (Lines 18 plus Line 19)	0.0	(2,550.6)	(3,495.2)	313.9	53.6
20. Cost containment expenses	0.0	(2,732.9)	(135.2)	(11.3)	0.4
21. Other claims adjustment expenses	0.0	0.0	(322.9)	(31.5)	1.4
22. Total underwriting deductions (Line 23)	0.0	2,704.2	(6,182.5)	41.1	65.0
23. Total underwriting gain (loss) (Line 24)	0.0	(2,604.2)	6,282.5	58.9	35.0
Unpaid Claims Analysis (U&I Exhibit, Part 2B)					
24. Total claims incurred for prior years (Line 17, Col. 5)		(63,599)	(149,088)	772,655	2,053,891
25. Estimated liability of unpaid claims-[prior year (Line 17, Col. 6)]		(2,614)	352,749	686,289	1,582,601
Investments In Parent, Subsidiaries and Affiliates					
26. Affiliated bonds (Sch. D Summary, Line 12, Col. 1)					0
27. Affiliated preferred stocks (Sch. D Summary, Line 18, Col. 1)				0	0
28. Affiliated common stocks (Sch. D Summary, Line 24, Col. 1)				0	0
29. Affiliated short-term investments (subtotal included in Schedule DA Verification, Col. 5, Line 10)				0	0
30. Affiliated mortgage loans on real estate					
31. All other affiliated					
32. Total of above Lines 26 to 31	0	0	0	0	0
33. Total investment in parent included in Lines 26 to 31 above.					

NOTE: If a party to a merger, have the two most recent years of this exhibit been restated due to a merger in compliance with the disclosure requirements of SSAP No. 3, Accounting Changes and Correction of Errors? Yes [] No []
 If no, please explain:

SCHEDULE T PREMIUMS AND OTHER CONSIDERATIONS

Allocated by States and Territories

States, etc.	1 Active Status (a)	Direct Business Only									
		2 Accident and Health Premiums	3 Medicare Title XVIII	4 Medicaid Title XIX	5 CHIP Title XXI	6 Federal Employees Health Benefits Program Premiums	7 Life and Annuity Premiums & Other Considerations	8 Property/Casualty Premiums	9 Total Columns 2 Through 8	10 Deposit-Type Contracts	
1. Alabama	AL	N								0	
2. Alaska	AK	N								0	
3. Arizona	AZ	N								0	
4. Arkansas	AR	N								0	
5. California	CA	N								0	
6. Colorado	CO	N								0	
7. Connecticut	CT	N								0	
8. Delaware	DE	N								0	
9. District of Columbia	DC	N								0	
10. Florida	FL	N								0	
11. Georgia	GA	N								0	
12. Hawaii	HI	N								0	
13. Idaho	ID	N								0	
14. Illinois	IL	N								0	
15. Indiana	IN	N								0	
16. Iowa	IA	L								0	
17. Kansas	KS	N								0	
18. Kentucky	KY	N								0	
19. Louisiana	LA	N								0	
20. Maine	ME	N								0	
21. Maryland	MD	N								0	
22. Massachusetts	MA	N								0	
23. Michigan	MI	N								0	
24. Minnesota	MN	N								0	
25. Mississippi	MS	N								0	
26. Missouri	MO	N								0	
27. Montana	MT	N								0	
28. Nebraska	NE	N								0	
29. Nevada	NV	N								0	
30. New Hampshire	NH	N								0	
31. New Jersey	NJ	N								0	
32. New Mexico	NM	N								0	
33. New York	NY	N								0	
34. North Carolina	NC	N								0	
35. North Dakota	ND	N								0	
36. Ohio	OH	N								0	
37. Oklahoma	OK	N								0	
38. Oregon	OR	N								0	
39. Pennsylvania	PA	N								0	
40. Rhode Island	RI	N								0	
41. South Carolina	SC	N								0	
42. South Dakota	SD	N								0	
43. Tennessee	TN	N								0	
44. Texas	TX	N								0	
45. Utah	UT	N								0	
46. Vermont	VT	N								0	
47. Virginia	VA	N								0	
48. Washington	WA	N								0	
49. West Virginia	WV	N								0	
50. Wisconsin	WI	N								0	
51. Wyoming	WY	N								0	
52. American Samoa	AS	N								0	
53. Guam	GU	N								0	
54. Puerto Rico	PR	N								0	
55. U.S. Virgin Islands	VI	N								0	
56. Northern Mariana Islands	MP	N								0	
57. Canada	CAN	N								0	
58. Aggregate Other Aliens	OT	XXX	0	0	0	0	0	0	0	0	0
59. Subtotal	XXX	0	0	0	0	0	0	0	0	0	0
60. Reporting Entity Contributions for Employee Benefit Plans	XXX									0	
61. Totals (Direct Business)	XXX	0	0	0	0	0	0	0	0	0	0
DETAILS OF WRITE-INS											
58001.	XXX										
58002.	XXX										
58003.	XXX										
58998. Summary of remaining write-ins for Line 58 from overflow page	XXX	0	0	0	0	0	0	0	0	0	0
58999. Totals (Lines 58001 through 58003 plus 58998)(Line 58 above)	XXX	0	0	0	0	0	0	0	0	0	0

(a) Active Status Counts:

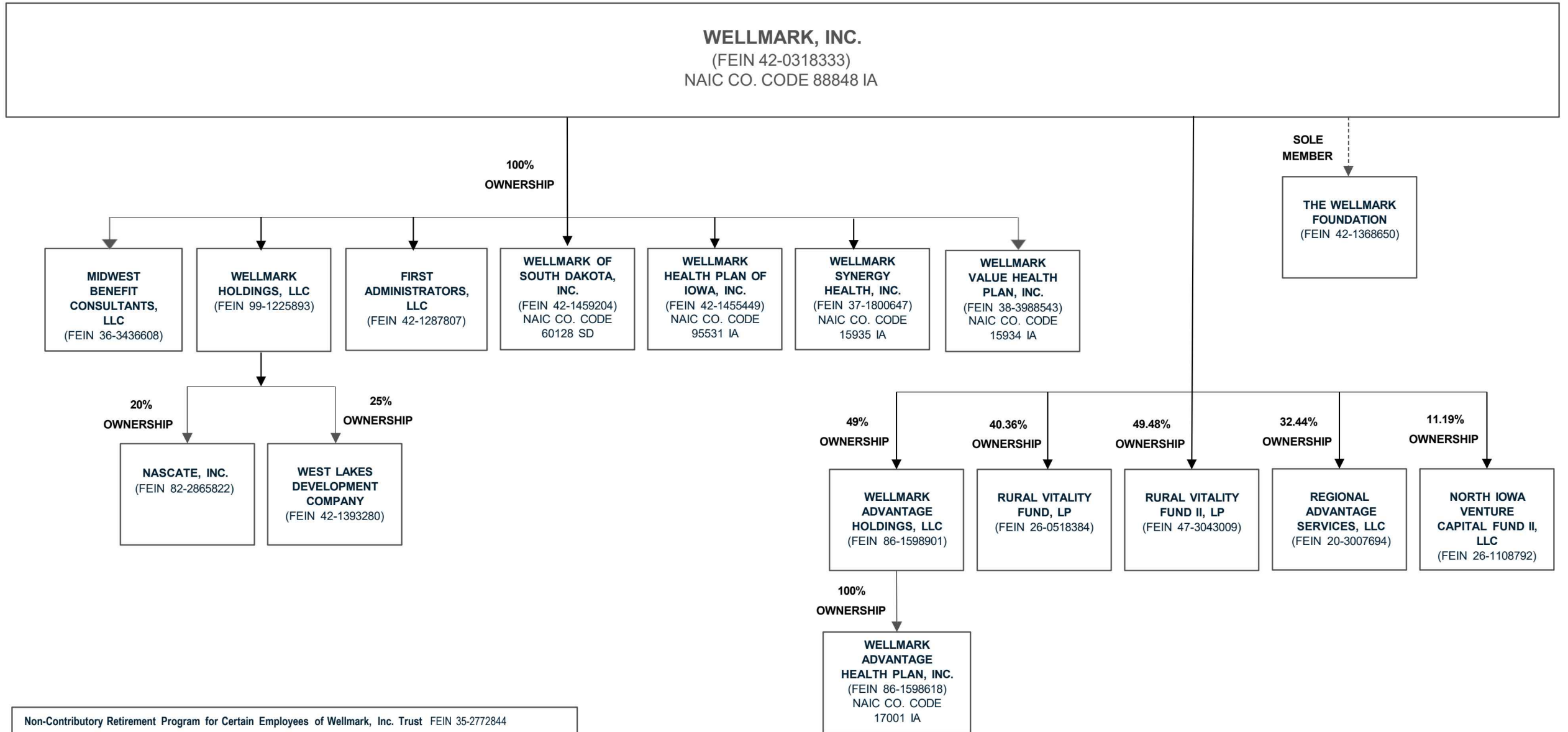
- 1. L - Licensed or Chartered - Licensed insurance carrier or domiciled RRG..... 1
- 2. R - Registered - Non-domiciled RRGs..... 0
- 3. E - Eligible - Reporting entities eligible or approved to write surplus lines in the state. 0
- 4. Q - Qualified - Qualified or accredited reinsurer..... 0
- 5. N - None of the above - Not allowed to write business in the state..... 56

(b) Explanation of basis of allocation by states, premiums by state, etc.

Accident and Health Premiums are allocated according to the location of the group or individual purchaser at the point of issue.

SCHEDULE Y – INFORMATION CONCERNING ACTIVITIES OF INSURER MEMBERS OF A HOLDING COMPANY GROUP

PART 1 – ORGANIZATIONAL CHART



Non-Contributory Retirement Program for Certain Employees of Wellmark, Inc. Trust FEIN 35-2772844

Wellmark, Inc. Savings and Investment Plan Trust FEIN 42-0318333

OVERFLOW PAGE FOR WRITE-INS

NONE